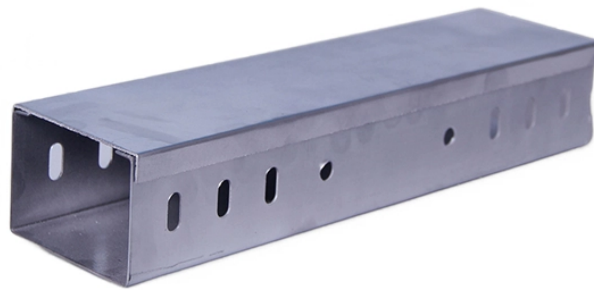


Does DAC fiber optic cable support Huawei switches



Overview

The QSFP28-100G-CU2M cable is connected via the pre-assembled QSFP28 to QSFP28 connectors and can be used via plug and play to expand your network. DACs are classified into active cables and passive cables. Active DACs have built-in amplifiers and equalizers to improve signal quality, but are. Abstract: The article explores practical applications of 25GB DAC cables, confirming their effectiveness for short-distance, high-bandwidth networking scenarios involving SFP28-compatible devices like Cisco Nexus 9300 and Huawei CE6850. Key takeaways highlight proper selection criteria, limitations. Active DAC design has a signal amplification and a class 4x 10G Clock and Data Recovery (CDR) or Equalizer technology to support longer distances than passive DAC cable. 3ba and compliant MSA SFF-8436, application in 40G Ethernet, infiniband QDR and Omni-path, suitable. The below table lists optical transceivers, active optical cables (AOC), and direct attach cables (DAC). They have been tested by Optcore or reported by other sources to work with most network equipment (switches, routers, servers, network interface cards, NICs, storage), with no compatibility. I'm trying to setup a new network The core of the Network is a Huawei S6730-H24X6C switch. I'm now trying to connect a

Server with a QNAP LAN-40G2SF-MLX card, a rebranded Mellanox ConnectX-3 Pro, to the switch. But neither the switch nor the server sets the link to UP. When I connect both ends of.

Does DAC fiber optic cable support Huawei switches



I used this cable to link a mellanox Connect-x 3 card with a QSFP ending (40gpbs) in my workstation to a standard SFP+ switch at 10gbps. Only the first link works (you have to leave 3 sfp+ endings ...



Also maybe try a DAC cable that's designed to support QSFP+ specifically. SFP/QSFP is technically forwards/backwards compatible, but the DAC/SFP may be coded for one speed only.



Model: ALQ28-LR4-10 US\$220.00 Add to Cart For Huawei QSFP28-100G-LR4 100G QSFP28-LR4 Duplex LC Connector SMF Wavelength: 1290-1310nm 10km Learn More



Abstract: The article explores practical applications of 25GB DAC cables, confirming their effectiveness for short-distance, high-bandwidth networking scenarios involving SFP28-compatible devices like ...



The QSFP28-100G-CU2M DAC cable is a passive twinax copper cable with QSFP28 to QSFP28 connectors, which is suitable for use in 100G fiber optic networks with Huawei hardware.



Active DAC design has a signal amplification and a class 4x 10G Clock and Data Recovery (CDR) or Equalizer technology to support longer distances than passive DAC cable.



They have been tested by Optcore or reported by other sources to work with most network equipment (switches, routers, servers, network interface cards, NICs, storage), with no compatibility issues with ...



I used this cable to link a mellanox Connect-x 3 card with a QSFP ending ...



the DAC cable assembly connector. This was originally implemented to ensure only authorized optical transceivers were used with a particular vendor's equipment. However, as the market matured and ...



These cables are affordable, simple to deploy, and ideal for short-distance connections. They come with factory-terminated SFP+ connectors, eliminating the need for separate optical ...

Contact Us

For more information, pricing, or custom network solutions, please contact us:

Website: <https://www.hashherbcafe.co.za>

Email: hello@hashherbcafe.co.za

Phone: +27 63 814 7295

Address: 15 Galaxy Road, Linbro Business Park, Johannesburg, 2065, South Africa

This document is for informational purposes only. Specifications subject to change without notice.

