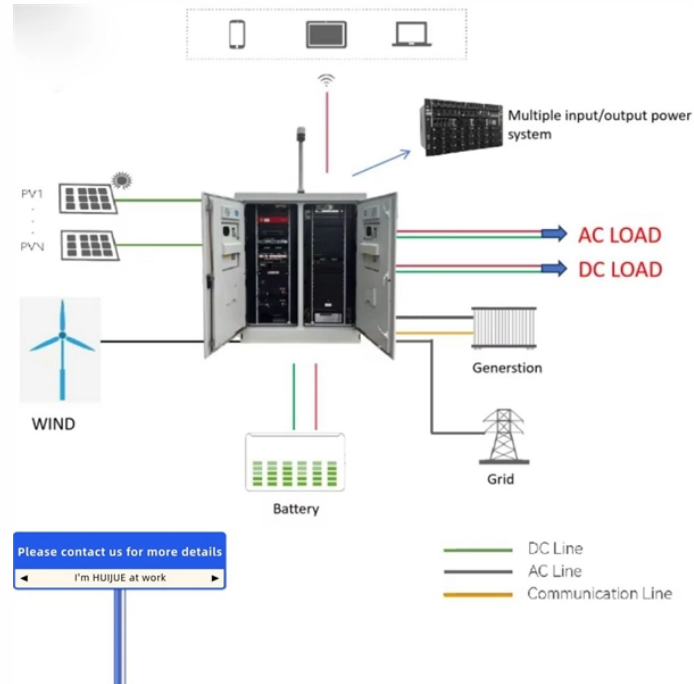


## Distribution box remodeling



### Overview

Whenever you're working with electricity in your home, safety is key. Before you begin installing your new remodeling box, turn off the power at your circuit breaker panel box. Use a voltage tester to ensure.



## Distribution box remodeling



Before starting the installation, finding a proper place for putting the distribution box is crucial, because it largely decides the safety and convenience of maintenance. Let's see what factors ...



Typical cost ranges for replacing a distribution box or service panel in the United States vary widely based on panel size, amperage, labor, and whether a full service upgrade is needed.



Buyers typically pay for a full panel replacement, including labor, materials, and permits. Key cost drivers include panel amperage, indoor vs outdoor location, wiring length, and whether a full ...



Learn how to install a distribution box safely and correctly. Covers wiring, placement, standards, and expert tips for a compliant setup.



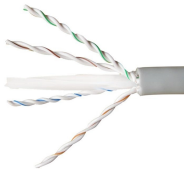
This article guides you through selecting a distribution box that is both affordable and safe, emphasizing key features, configuration, and practical considerations.



Homeowners and contractors typically pay for distribution box replacement based on box type, amperage, and install complexity. The main cost drivers are the existing wiring layout, required ...



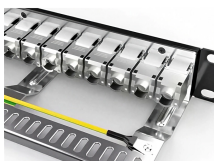
From distribution boxes to cables, lighting, and beyond, we're your one-stop shop for safe, sustainable, and stylish building materials. Contact our team today to get a free quote or ...



Choose from our selection of remodeling boxes, including steel switch boxes, extenders, and more. Same and Next Day Delivery.



Whether you're a homeowner looking to understand your electrical setup, an electrician seeking comprehensive guidance, or a facility manager planning an upgrade, understanding ...



The step-by-step instructions detail the process of placing a plastic remodeling box in drywall for a new outlet, including running wiring from an existing outlet to power the new one.

## Contact Us

For more information, pricing, or custom network solutions, please contact us:

Website: <https://www.hashherbcafe.co.za>

Email: [hello@hashherbcafe.co.za](mailto:hello@hashherbcafe.co.za)

Phone: +27 63 814 7295

Address: 15 Galaxy Road, Linbro Business Park, Johannesburg, 2065, South Africa

This document is for informational purposes only. Specifications subject to change without notice.

