

## Distribution box model 1ALZM2

7.5mm Radius



## Distribution box model 1ALZM2



The HWB60-AL Hard-Wired Box is the perfect fit for accessory circuits and overflow circuits from your main PDM. For smaller vehicles, this unit is an ideal solution as a main vehicle module.



Below is a breakdown of which Bento Box® power distribution box works best for specific industries and markets. Do you need a custom power distribution box or solution to fit your unique market, industry ...

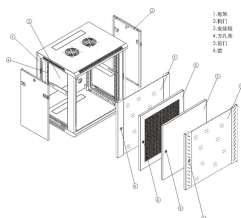


Network Cabinet & Rack

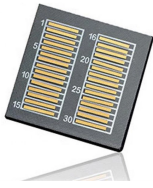
Choose from our selection of power distribution boxes in a wide range of styles and sizes. Same and Next Day Delivery.



Featuring a black cover with a gasket, this dust-tight, waterproof power distribution box carries an IP67/IP69K rating, and it features latches that keep the cover securely in place.



Modular enclosure system for individual power distribution solutions and a broad product range for signal distribution. Available in all forms and configurations, also in special versions like ergonomic sensor ...



ZXM Description Are you looking for a compact, easy-to-install waterproof fus. and relay box? The HWB60-AL Series Hard-Wired Waterproof Power Distribution Box with AssureLatch™ is a great ...



Description Ideal for use as the main unit on small vehicles or for accessory circuits and overflow circuits from your main power distribution module (PDM), the compact HWB18 Hard-Wired Waterproof DC ...



Browse power distribution boxes with circuit breaker protection and multiple outlet configurations. Shop durable solutions for construction and emergency use.



In this catalog, temporary power distribution units mounted on dolly carts are designed for quick deployment of power distribution equipment, such as panels, transformers, receptacles and cords.



The “PDU” is equipped with outputs that allow the user to plug in power tools, lighting, laptop computer, heavy machinery and more. Stock and custom units available. All specifications are subject to ...

## Contact Us

For more information, pricing, or custom network solutions, please contact us:

Website: <https://www.hashherbcafe.co.za>

Email: [hello@hashherbcafe.co.za](mailto:hello@hashherbcafe.co.za)

Phone: +27 63 814 7295

Address: 15 Galaxy Road, Linbro Business Park, Johannesburg, 2065, South Africa

This document is for informational purposes only. Specifications subject to change without notice.

