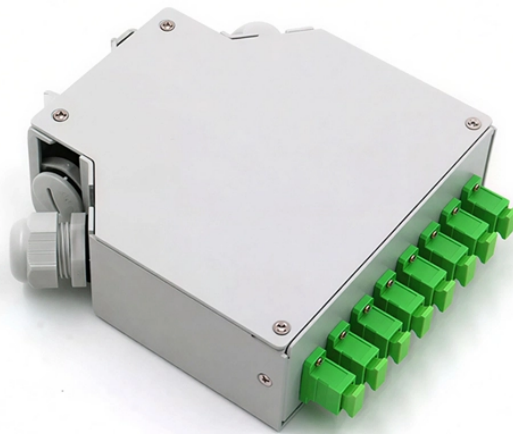


## Distribution box cable grounding parallel connection

---



### Overview

If two or more spindles are used, and grounded together at the spindle side, the tool cable ground resistance is connected in parallel. In that case the resistance will be reduced to a safe level. Each DISTRIBUTION BOX and controller must be grounded. Grounding of the units: Attach a ground wire from one of. All equipment grounding conductors in the gutter must be joined together. Multiple. Grounding systems aren't just boxes and wires – they're the silent bodyguards protecting people and equipment from electrical disasters.

## Distribution box cable grounding parallel connection



The key difference between bonding and grounding is that bonding distributes an electrical charge while grounding neutralizes it. With the differences established, ...



The box itself will be grounded, so if something happen to the 12/2 that needed a grounded box, it should be protected. I know that the neutrals cannot be connected together, but ...



Connect an equipment grounding conductor directly from each chassis to an individual bolt on the ground bus. For a chassis with no ground stud, use a mounting bolt (Figure 5).



If two or more spindles are used, and grounded together at the spindle side, the tool cable ground resistance is connected in parallel. In that case the resistance will be reduced to a safe ...



Power system grounds are usually single-point grounded and is most effective at low frequency from DC to about 20 kHz. There are two ways by which power circuits are single point ...



While the structural metal frame of a building can't be used as an EGC, it can be used as a conductor to interconnect grounding electrodes [250.68 (C) (2)]. Knowing the difference is what makes the ...



It is recommended to ground the neutral at various strategic locations in distribution substations, overhead lines and underground cables, distribution transformers, and all loads.



Correct grounding of services depends upon understanding the definition and role of the grounded conductor.



The key difference between bonding and grounding is that bonding distributes an electrical charge while grounding neutralizes it. With the differences established, let's discuss the matter of grounding and ...



The purpose of this manual is to tell you the grounding and cabling principles of variable speed drive systems. The guidelines help you to fulfill the personnel safety, electromagnetic ...



Following the above steps and precautions can ensure the correct connection of the distribution box grounding wire, thereby ensuring the safe operation of electrical equipment and the ...



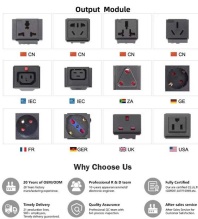
If conductors are installed in parallel in the same raceway or cable tray, a single wire-type conductor shall be permitted as the equipment grounding conductor.



Everything looks perfect until the moment of truth arrives. That's why today we'll break down the life-or-death details of grounding distribution boxes and cable shielding layers using plain ...



Following the above steps and precautions can ensure the correct connection of the distribution box grounding wire, thereby ensuring the safe ...



If conductors are installed in parallel in the same raceway or cable tray, a single wire-type conductor shall be permitted as the equipment grounding conductor.

## Contact Us

For more information, pricing, or custom network solutions, please contact us:

Website: <https://www.hashherbcafe.co.za>

Email: [hello@hashherbcafe.co.za](mailto:hello@hashherbcafe.co.za)

Phone: +27 63 814 7295

Address: 15 Galaxy Road, Linbro Business Park, Johannesburg, 2065, South Africa

This document is for informational purposes only. Specifications subject to change without notice.

