

Distribution Diagram of Communication Equipment Room Racks



Distribution Diagram of Communication Equipment Room Racks



Each equipment rack shall have two dedicated 20A circuits, one normal and one emergency power. Larger circuits may be required for specialized equipment. Lights and convenience outlets (at ...



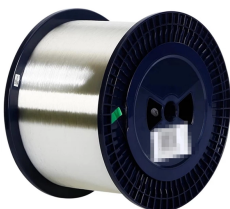
A rack elevation diagram provides a visual representation of the layout and configuration of your equipment in a data center or server room. This diagram helps technicians and network ...



The Entrance Telecommunications Room must be equipped with two (2) 19" aluminum relay racks which are anchored to the floor and are supported from the wall with a 12" ladder tray.



Install new equipment racks with all related mounting hardware, vertical and horizontal cable management and power strips in the MDFs and IDFs as required for project and as shown on drawings.



Installation of active equipment requires environmental control and dedicated power circuit. All utility cabinets shall be listed and marked in accordance with applicable electrical codes.



WIRE MANAGERS, VIDEO SPLITTERS, FIBER TERMINATION PANELS AND SPLICE TRAYS TO BE INSTALLED IN A DEDICATED OSP RACK. DETAILS OF THE EQUIPMENT NEEDED WILL VARY ...



A rack layout diagram shows the equipment mounted in each rack position and should include diagrams for equipment accessible from both the front and back of ...



This Section includes the cable management, connecting devices, related equipment, racks and information pertaining to mounting and installation, to be ...



This section includes the specifications for constructing and building out of Telecommunications Equipment Rooms (MDF/IDFs) to be used for supporting telecommunications ...



Adjust arrangements and locations of distribution frames, cross-connects, and patch panels in equipment rooms to accommodate and optimize arrangement and space requirements of telephone ...



This section includes detailed CAD files that provide precise layouts and arrangements for the installation of equipment racks, cable management systems, and other vital fittings necessary for ...



Adjust arrangements and locations of distribution frames, cross-connects, and patch panels in equipment rooms to accommodate and optimize arrangement and space requirements of telephone ...

Contact Us

For more information, pricing, or custom network solutions, please contact us:

Website: <https://www.hashherbcafe.co.za>

Email: hello@hashherbcafe.co.za

Phone: +27 63 814 7295

Address: 15 Galaxy Road, Linbro Business Park, Johannesburg, 2065, South Africa

This document is for informational purposes only. Specifications subject to change without notice.

