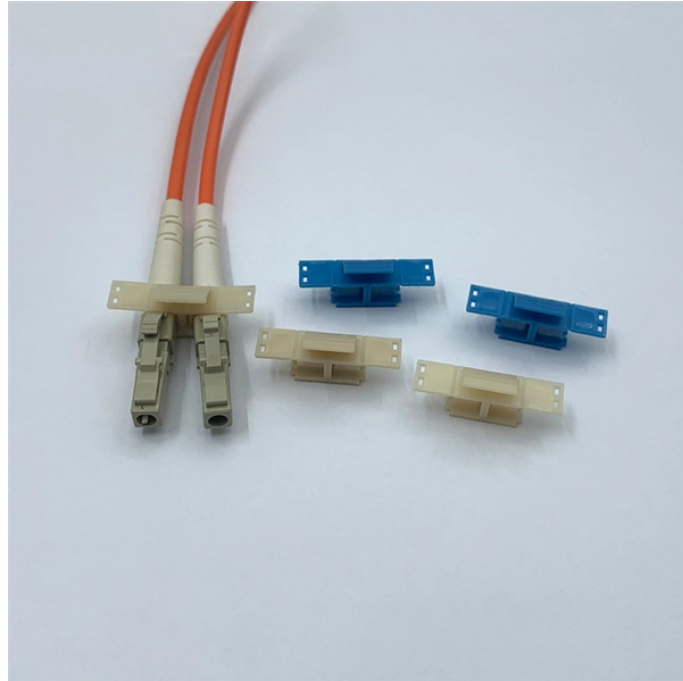


## Distribution Box Marking Bar



### Overview

No need to measure, you can accurately locate the center of the distribution box, protect the wires from damage, avoid accidental drilling or cutting of wires, effectively prevent potential dangers, and save time and energy! Simply insert the locator into the electrical box before. No need to measure, you can accurately locate the center of the distribution box, protect the wires from damage, avoid accidental drilling or cutting of wires, effectively prevent potential dangers, and save time and energy! Simply insert the locator into the electrical box before. In cabinets and other tight spaces, ground multiple wires at one convenient spot Create a convenient central grounding point by connecting multiple ground wires Our most conductive metal for electrical applications—all with material certificates for traceability Lightweight, easy to machine, and. Terminal blocks are commonly used to provide a convenient interconnection point between the pre-assembled portions of a device or system and the external field wiring to which it must be connected in the course of installation. Terminal block marker strips offer a convenient means of labelling or. It has many important jobs to help your home work well. Here is a simple table that shows what it does: Sends electricity from the main

supply to each circuit. Every area gets the power it needs. Uses breakers or fuses to stop too much current. Shares power. Electrical junction boxes are accessible enclosures, mainly made of metal or plastic, where splices and connections of electrical wiring distribution lines are located and protect electrical and electronic devices and circuits from the environment and improper handling. Up to 1400 models available and even more with our on-demand customization service. Our HTP600 printer is an all-in-one. • Arc-Flash Warning Labels with excellent price points! Labeling your wires, cables and other products helps ensure safety by allowing people to know the purpose of each wire in your panel or on your machine or product. Your professional source for the largest online selection of Wire Markers.

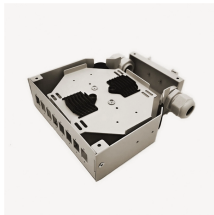
## Distribution Box Marking Bar



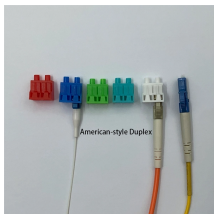
BARTEC stainless steel housings and distribution boxes are designed and approved for Zone 1 and 2 as well as Zone 21 and 22. They are particularly suitable



Power Busbar Systems are designed for the safe transport and distribution of electrical energy, ranging from 32A to 6300A, ensuring efficiency and reliability.



Shop DigiKey's large in-stock selection of Terminal Block Marker Strips. View inventory, pricing and order now for same day shipping!



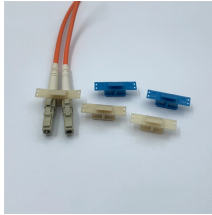
No need to measure, you can accurately locate the center of the distribution box, protect the wires from damage, avoid accidental drilling or cutting of wires, effectively prevent potential dangers, and save ...



Your professional source for the largest online selection of Wire Markers, Voltage Markers and Tags, Barricade and Buried Line Tapes and Arc Flash Labels.



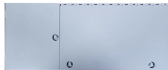
QILIPSU 6 Way DIN Rail Circuit Breaker Box  
UL94-V0 PC/ABS IP65 Waterproof Distribution  
Enclosure with Longer Bus Bars for Indoor Outdoor  
and Solar Use Add to cart



Understand your distribution box labels to identify  
circuits, improve safety, and troubleshoot  
electrical issues in your home with confidence.



The markers and marking systems offering covers  
all the needs for electrical panel identification:  
markers and labels for terminal block, wire &  
cable, component & equipment.



Symbols of Electrical Junction Boxes. They are  
accessible boxes where the splices and  
connections of the electrical wiring are located.



Choose from our selection of distribution bars,  
including over 600 products in a wide range of  
styles and sizes. Same and Next Day Delivery.

## Contact Us

For more information, pricing, or custom network solutions, please contact us:

Website: <https://www.hashherbcafe.co.za>

Email: [hello@hashherbcafe.co.za](mailto:hello@hashherbcafe.co.za)

Phone: +27 63 814 7295

Address: 15 Galaxy Road, Linbro Business Park, Johannesburg, 2065, South Africa

This document is for informational purposes only. Specifications subject to change without notice.

