

## Distribution Box Installation and Acceptance



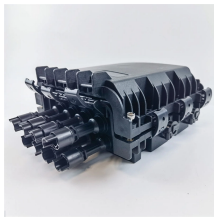
### Overview

The steps to install a small distribution box include selecting a suitable location, installing the base, placing the distribution box, connecting the wires, and checking for acceptance. Warm reminder: Do not disassemble or modify without experience and professionals. Covers wiring, placement, standards, and expert tips for a compliant setup. Whether in a home or an industrial facility, this box keeps. Electric and Gas Service Requirements (TD-7100M) Architects and Engineers Electrical Contractors Plumbing Contractors City and County Building Inspectors Manufacturers of Electrical Equipment Pacific Gas and Electric Company Employees 2022-2023 Edition (Supersedes All Previous Editions and. Whether you are an electrical contractor or a construction brigade, knowing how to properly and safely install distribution boxes is the basis of ensuring the safe operation of the entire system. This essential piece of equipment serves as the nerve center of your electrical system, managing power flow. In modern electrical systems, cable distribution boxes (also known as electrical distribution boxes or distribution boxes) play a crucial role as the key hub for managing, distributing, and protecting circuits.

## Distribution Box Installation and Acceptance



Before starting the installation, finding a proper place for putting the distribution box is crucial, because it largely decides the safety and convenience of maintenance. Let's see what factors ...



Learn how to connect a distribution box with this easy-to-follow, step-by-step guide. From tools and materials needed to common installation mistakes and solutions, this comprehensive article will ...



Learn how to wire a distribution box step by step! This video shows real on-site footage of electrical installation, demonstrating safe and standardized wiring methods used by professionals.



The installation requirements and specifications of Distribution box involve many aspects, including site selection, fixing method, wiring specifications and safety protection.



The steps to install a small distribution box include selecting a suitable location, installing the base, placing the distribution box, connecting the wires, and checking for acceptance.

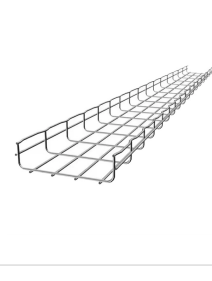


Proper installation of a distribution box requires careful planning and adherence to electrical codes. While major installations should always involve qualified electricians, understanding ...



SUPPORTS  
DIN RAIL INSTALLATION

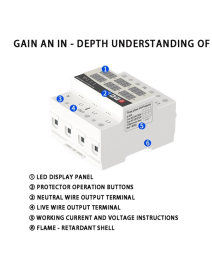
The installation requirements and specifications of Distribution box involve many aspects, including site selection, fixing method, wiring specifications ...



The latest NEC updates prioritize adaptive solutions for modern energy demands. With homes now packing solar arrays, EV chargers, and smart-home systems, distribution boxes work harder than ...



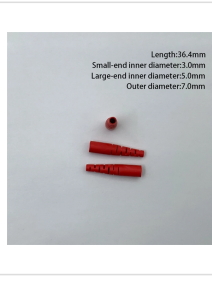
This article provides a detailed overview of the entire process of installing a distribution box, from pre-installation preparation to post-installation maintenance, and summarizes common ...



GAIN AN IN-DEPTH UNDERSTANDING OF

- LED DISPLAY PANEL
- PROTECTOR OPERATION BUTTONS
- NEUTRAL WIRE OUTPUT TERMINAL
- LIVE WIRE OUTPUT TERMINAL
- WORKING CURRENT AND VOLTAGE INSTRUCTIONS
- FLAME-RETARDANT SHELL

These requirements apply as long as applicants complete the approved projects within 18 months.



Length:36.4mm  
Small-end inner diameter:3.0mm  
Large-end inner diameter:5.0mm  
Outer diameter:7.0mm

Learn how to install a distribution box safely and correctly. Covers wiring, placement, standards, and expert tips for a compliant setup.

## Contact Us

For more information, pricing, or custom network solutions, please contact us:

Website: <https://www.hashherbcafe.co.za>

Email: [hello@hashherbcafe.co.za](mailto:hello@hashherbcafe.co.za)

Phone: +27 63 814 7295

Address: 15 Galaxy Road, Linbro Business Park, Johannesburg, 2065, South Africa

This document is for informational purposes only. Specifications subject to change without notice.

