

Distribution Box Circuit Encoding Machine

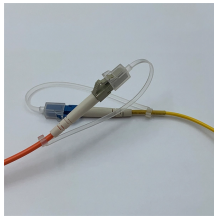
DATA ADJUSTABLE, EASY TO USE



SET INCREASE DECREASE POWER SWITCH



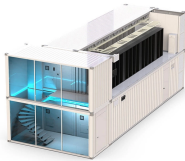
Distribution Box Circuit Encoding Machine



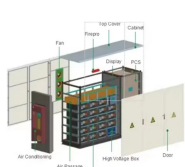
Explore the full production process and standards that define high-quality metal distribution boxes at E-abel. From digital design to IP66-compliant fabrication, see how we deliver ...



Learn what to look for in an electrical distribution box manufacturing machine, from types and features to pricing and supplier tips.



WEMO designs unique and flexible sheet metal production lines for the production of casing and doors for electrical enclosures and distribution cabinets. These fully automatic punching and bending lines ...



It includes parameters for materials, forming capabilities, speed, and quality, along with a description of the production line's components and layout.



By providing organized circuit management, a distribution box allows for easy maintenance and ensures compliance with electrical safety codes in both residential and industrial environments.



Learn the step-by-step distribution box manufacturing process—from design and material selection to assembly and testing. E-abel provides high-quality electrical enclosures with customization options ...



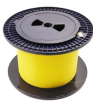
This production line is equipment for production of distribution boxes. The strip coil to be processed is manually placed on the uncoiler, and then corrected and tensioned.



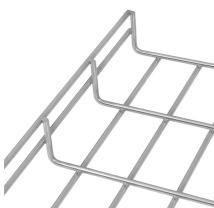
The electrical control box roll forming machine is a highly efficient automated equipment specifically designed for the mass production of electrical control box enclosures.



Through servo control and roll forming technology, it realizes a high degree of automation. The electrical junction box making machine produced by PATECH can be adjusted and set according to the ...



From decentralized energy, signal and data distribution to distribution boxes for smart buildings, we offer the right solution.



It includes parameters for materials, forming capabilities, speed, and quality, along with a description of the production line's components and layout.

Contact Us

For more information, pricing, or custom network solutions, please contact us:

Website: <https://www.hashherbcafe.co.za>

Email: hello@hashherbcafe.co.za

Phone: +27 63 814 7295

Address: 15 Galaxy Road, Linbro Business Park, Johannesburg, 2065, South Africa

This document is for informational purposes only. Specifications subject to change without notice.

