

Distribution Box Air Resistance



Distribution Box Air Resistance



As air from the supply outlet moves across the ceiling surface, a certain amount of friction occurs between the supply air and the ceiling surface. This resistance to the flow of the supply air pulls the ...



The Air Excellent distribution box DB824 is a versatile and efficient solution, complete with a stepped adaptor, 24 internal air restrictor rings, and 20 covers for unused connections.



This article explains what a distribution box does, typical configurations, sizing guidelines, installation considerations, and maintenance tips to help facility owners and homeowners ...



Designers must recognize that junction boxes are cost effective but add more pressure to systems compared to trunk and branch designs. Pressures varied significantly with size of box, relative ...



ASHRAE Standard 90.1 limits the quantity of air that may be reheated; in northern climates, it will be difficult to maintain comfort with single duct reheat systems



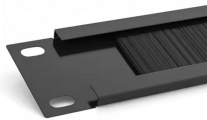
Discover the key factors for designing an efficient plenum boxes in HVAC systems. Learn how to optimize airflow, reduce noise, and enhance system performance.



Properly designed duct systems can maintain uniform temperatures throughout the house, efficiently and quietly. The efficiency of air distribution systems has been found to be 60-75% or less in many ...



In this study, laboratory testing and a detailed analysis of airflow and resistance were conducted by the Energy Performance of Buildings Group at LBNL.



Here's the challenge to a non-mixing box: because the hot and cold air streams aren't mixed in the box, cold air goes down one side of the ductwork and hot air goes down the other.



What is the pressure requirement for balancing airflow in this configuration? The total pressure () at any location within a system is a measure of the total mechanical energy at that location. It is the sum of ...

Contact Us

For more information, pricing, or custom network solutions, please contact us:

Website: <https://www.hashherbcafe.co.za>

Email: hello@hashherbcafe.co.za

Phone: +27 63 814 7295

Address: 15 Galaxy Road, Linbro Business Park, Johannesburg, 2065, South Africa

This document is for informational purposes only. Specifications subject to change without notice.

