

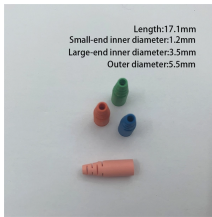
Disaster Recovery Core Switch



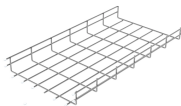
Disaster Recovery Core Switch



A well-architected disaster recovery (DR) plan enables you to recover quickly from disasters and continue to provide services to your users.



Learn how to identify and prioritize critical network components for an effective disaster recovery strategy in network administration.



Here's how to create a network disaster recovery plan that works: 1. Achieve full risk and asset visibility. Start by creating a comprehensive, up-to-date inventory and map of all your network ...



Transform disaster recovery with robotic fiber switching. Deploy from street cabinets to hyperscale cores for 60-second failover, zero truck rolls, and power-immune connections.



We have 2 core switches, in different physically separate buildings, each access switch links back to both. We have 2 firewalls, one in each building, 2 and ISP connections feeding both ...



With full consideration of these criteria, a management team can feel confident that the data center component of a disaster recovery plan can withstand any event that could threaten the business.



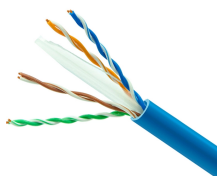
This command enables or disables disaster recovery mode on the managed device. This command is used to recover operations on a managed device that has inherited an incorrect configuration from ...



Seasoned network engineers know this drill: that heartbeat-skipping instant when interfaces drop dead and your core infrastructure grinds to a halt. But executing a cisco switch hard reset isn't ...



This chapter provides references and information that will enable you to recover an Ethernet LAN switch in an ASTRO® 25 system, in the event of a failure.



These topics provide information about how to set up and use disaster recovery in your production environment. Key terms for understanding disaster recovery implementation on Catalyst ...

Contact Us

For more information, pricing, or custom network solutions, please contact us:

Website: <https://www.hashherbcafe.co.za>

Email: hello@hashherbcafe.co.za

Phone: +27 63 814 7295

Address: 15 Galaxy Road, Linbro Business Park, Johannesburg, 2065, South Africa

This document is for informational purposes only. Specifications subject to change without notice.

