

# Disable the optical port on the switch



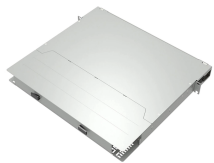
## Overview

Click the switch, click on ports, then assign them to disabled. You can give that port a name and under that is the option Port. Nothing here is necessary for your switch to continue operating as a "dumb" unmanaged switch, but the steps here are highly recommended nonetheless to set up basic security, management, and advanced features you might find useful. Note: This page is for the ICX7xxx series, anything running FastIron. The assign port-type 100ge command sets the maximum rate of QSFP28 interfaces to 100 Gbit/s. Here, you can select and configure the desired ports from the Edit Port Settings page. Before you remove a transceiver from a device, ensure that you have taken the necessary precautions for the safe handling of lasers (see Laser and LED Safety Guidelines and Warnings). Ensure that you have the following parts and tools available: The transceivers for Juniper Networks devices are.

## Disable the optical port on the switch



To configure port settings, follow these steps: Click Port Management > Port Settings. The port settings are displayed for all ports. Link Flap Prevention—Select to minimize the disruption ...



Example The following command disables ports 3, 5, and 12 through 15 on a stand-alone switch:



Learn how to check SFP module health on Cisco switches. This guide covers essential CLI commands (show inventory, DOM), fixes for "unsupported transceiver" errors, and interpreting optical power levels.



If a module is identified as non-Cisco original, the switch may shut down the port, trigger an alarm, or display a warning message. Cisco also provides hidden commands to allow the use of ...



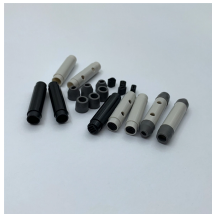
Whatever ports you add must have the same VLAN membership as the existing LAG, or you'll get an error about tag type not matching. To manage the lag, such as add it to VLANs, apply ...



Mishandling these sensitive optical components can lead to port damage, link failures, or even permanent transceiver failure. This guide provides detailed, professional steps to ensure you ...



Four SFP28 Ethernet optical interfaces (25GE by default) and two QSFP28 Ethernet optical interfaces (40GE by default) have been configured using the set device port-config-mode enable command.



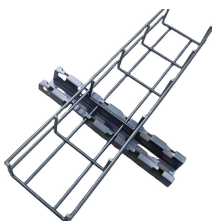
Unifi Devices and click on your switch. Now click on the cog-wheel (settings) and then choose a port you want to disable. You can give that port a name and under that is the option Port Profile. Set this to ...



Learn how to check SFP module health on Cisco switches. This guide covers essential CLI commands (show inventory, DOM), fixes for "unsupported ...



To prevent ESD damage to the transceiver, do not touch the connector pins at the end of the transceiver. Using your fingers, grasp the body of the transceiver and pull it straight out of the port. ...



Dell Networking PowerSwitch Layer 1 optical troubleshooting Summary: The purpose of this guide is to provide general guidelines for troubleshoot layer 1 connectivity issues when using transceivers in ...

## Contact Us

For more information, pricing, or custom network solutions, please contact us:

Website: <https://www.hashherbcafe.co.za>

Email: [hello@hashherbcafe.co.za](mailto:hello@hashherbcafe.co.za)

Phone: +27 63 814 7295

Address: 15 Galaxy Road, Linbro Business Park, Johannesburg, 2065, South Africa

This document is for informational purposes only. Specifications subject to change without notice.

