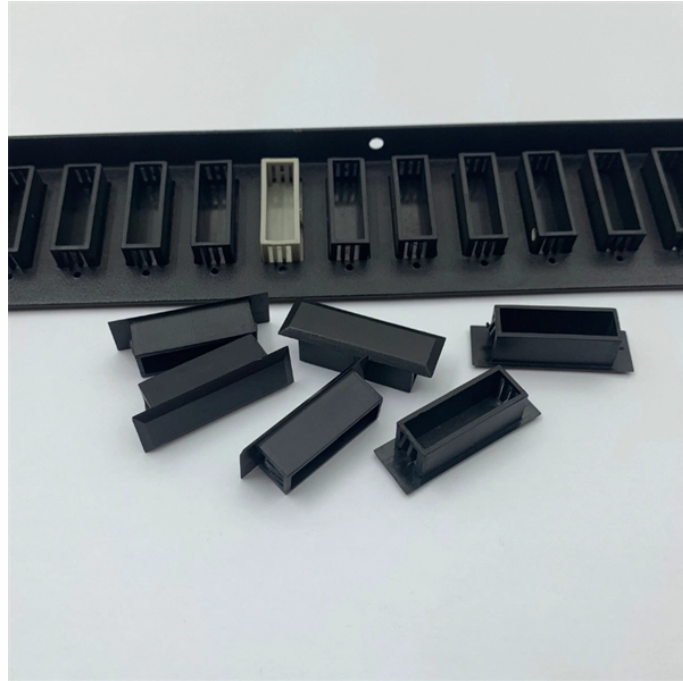


Direct Sales Linear Drive Pluggable Optical 25G



Direct Sales Linear Drive Pluggable Optical 25G



Another technology discussed in the report is Linear Drive Pluggable (LPO) transceivers and AOCs. The report includes historical data (2021-2025) and forecast (2026-2030) for shipments, revenues and ...



Linear Drive Pluggable Optics are pivotal in meeting these requirements, providing seamless integration and modular capabilities. The market is projected to grow at a CAGR of over 15% from 2023 to 2030, ...



They offer a modular approach to optical networking, allowing for easy upgrades, replacement, and scalability as network bandwidth requirements evolve. This report studies the global Linear Drive ...



Determination of key drivers, restraints, challenge, and opportunity. Identifies market needs and trends. Estimation of historical data based on secondary and primary data. Anticipating market recast by ...



Regionally, the report analyzes the Linear Drive Pluggable Optics (LPO) Modules markets in key regions. North America and Europe are experiencing steady growth, driven by government initiatives ...



LPO modules concentrate on enhancing data transmission capabilities in data centers, mobile networks, and IoT applications. Key characteristics include: Compact Form Factor: Designed ...



Chapter 2: Sales and revenue of Linear Drive Pluggable Optics in global, regional level and country level. It provides a quantitative analysis of the market size and development potential of each region.



The Global Linear Drive Pluggable Optical Transceiver Module Market exhibits diverse connector type segments, including LC, SC, MTP/MPO, ST, and FC connectors, each catering to specific ...



The Linear-Drive Pluggable Optics Modules (LPO) Market was valued at USD 0.75 billion in 2024 and is projected to reach USD 2.50 billion by 2034, registering a CAGR of 13.20%.



The Linear Pluggable Optics market is segmented by data rate into 10G, 25G, 40G, 100G, 200G, 400G, and above. The shift towards higher data rates is a defining trend in the market, driven by the ...

Contact Us

For more information, pricing, or custom network solutions, please contact us:

Website: <https://www.hashherbcafe.co.za>

Email: hello@hashherbcafe.co.za

Phone: +27 63 814 7295

Address: 15 Galaxy Road, Linbro Business Park, Johannesburg, 2065, South Africa

This document is for informational purposes only. Specifications subject to change without notice.

