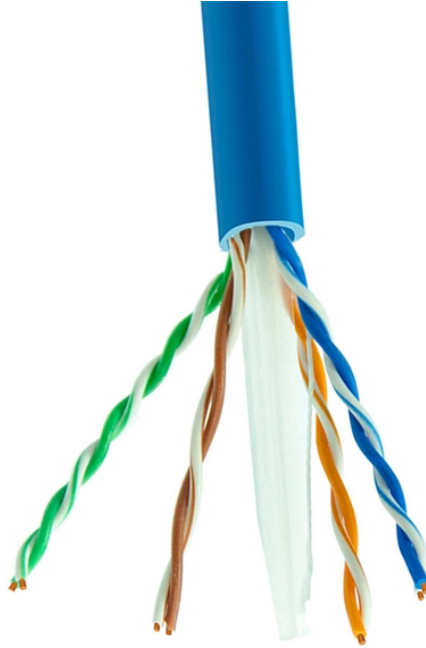


## Din Fiber Optic Connector Component Manufacturer



### Overview

Also, please take a look at the list of 31 din connector manufacturers and their company rankings. What Is a DIN Connector?

What Is a DIN. Rugged DIN style contacts and connectors that are capable of supporting wide bandwidth applications. The DIN Connector is available as single-mode and multimode version, and with a variety of. Try modifying your search term below or visit our Help Center. Mouser offers inventory, pricing, & datasheets for DIN Connector Fiber Optic Connectors. QPC Fiber Optic is an optical technology company headquartered in Southern California with locations in Laguna Niguel, California (Design Engineering, CNC Machining, Connectors, and Cable Assemblies) and Eastlake, Ohio (Advanced / Automated CNC Machining), serving customers worldwide since 1999.

## Din Fiber Optic Connector Component Manufacturer



Choose from our selection of DIN rails, including over 90 products in a wide range of styles and sizes. Same and Next Day Delivery.



This compact and unique connector offers great reliability and superior performance. The DIN Connector is available as single-mode and multimode version, and with a variety of cable boots. The connector ...



We utilize a variety of optical fiber connectors for cable assembly, including LC, SC, MDC, MTP /MPO, MU, MXC, E-2000, FC, ST, and expanded beam connectors. With advanced manufacturing ...



We supply DIN fiber optic connectors, there are single mode UPC, single mode APC and multimode UPC types available. These DIN fiber connectors are used in telecommunications, CATV, LAN, ...



ECIA Authorized Fiber Optic Connectors components are available from TTI. TTI offers inventory, pricing, & datasheets for Fiber Optic Connectors components from major suppliers.



This section provides an overview for din connectors as well as their applications and principles. Also, please take a look at the list of 31 din connector manufacturers and their company rankings.



The LSA (DIN) connector by DIAMOND SA is an IEC-compliant, push-pull fiber optic solution designed for high-density and industrial applications requiring reliable, low-loss performance and easy handling.



We specialize in designing and manufacturing fiber optic connectors, fiber optic cable assemblies, and custom fiber optic products for use in harsh environments.



Rugged DIN style contacts and connectors that are capable of supporting wide bandwidth applications. All fiber optic contacts are offered fully terminated and tested to ensure integrity for rugged ...



Din Tai Fung features an elegantly appointed semi-private dining room for more intimate gatherings, alongside a spacious main dining room designed to graciously host larger group celebrations.



Bao Bao Insiders Your monthly bite of Din Tai Fung exclusives, news and delicious surprises. We've saved a seat at the table for you.



SENKO Advanced Components provides precise, user-friendly, and application-focused fiber optic connectors, enabling network operators to achieve the performance and reliability needed to meet ...



DIN standards are technical guidelines established by the German Institute for Standardization (DIN). They define the requirements for products, processes, and services, ensuring safety, quality, and ...



DIN Media, one of the largest publishing houses in Germany for technical, scientific literature and standards from DIN, ISO, ASTM, AFNOR, BSI etc.



Mouser offers inventory, pricing, & datasheets for DIN Connector Fiber Optic Connectors.



Headquartered in Berlin, Germany, DIN is Germany's national standards organization, serving as its representative in the European CEN and the International ISO and IEC. With approximately 26,000 ...



DIN stands for "Deutsches Institut für Normung", meaning "German institute for standardization".

## Contact Us

For more information, pricing, or custom network solutions, please contact us:

Website: <https://www.hashherbcafe.co.za>

Email: [hello@hashherbcafe.co.za](mailto:hello@hashherbcafe.co.za)

Phone: +27 63 814 7295

Address: 15 Galaxy Road, Linbro Business Park, Johannesburg, 2065, South Africa

This document is for informational purposes only. Specifications subject to change without notice.

