

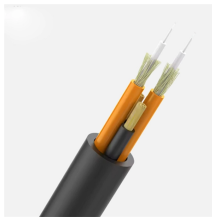
## Dimensions of electrical distribution boxes on construction sites in Croatia



## Dimensions of electrical distribution boxes on construction sites in



The panels are made in a sturdy and handy two-component technopolymer cabinet with a fire-resistant backrest, which allows them to be stored and reused in the next construction site.



A separate regulation is only in place for construction site power distributors. For this reason, we have adapted the power distributors in our construction series to the intended application.



This guide explores control panels, electrical boxes, breaker panels, bus bars, junction boxes, and custom enclosures to help you understand their sizes, types, and common applications.



This report provides a comprehensive analysis of electrical distribution board (DB) box sizes, including physical dimensions, electrical capacities, and market trends based on current 2025 ...



From residential 100-amp panels to massive 600 amp main distribution panels in commercial facilities, this comprehensive guide will help you understand distribution board types, ...



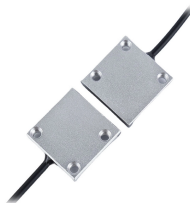
Find your construction site electrical enclosure easily amongst the 25 products from the leading brands (HLC, WALTHER WERKE, DIGITAL ELECTRIC, ...) on DirectIndustry, the industry specialist for your ...



A site box is an electrical device used on temporary sites such as construction sites, market stalls, campsites and trade fairs. It provides temporary electrical distribution before the electrical panel is ...



Electrical enclosure sizes are not universal, but most manufacturers follow common size families. This guide explains typical wall-mount and floor-standing dimensions, how to read catalog ...



Thermoplastic boards with optimum impact and weather resistance, ideal for primary and secondary distribution on construction sites, shipbuilding sites or temporary uses. Available in two sizes, Q ...



Various cable types, cross sections, and lengths as well as other components, such as distribution blocks, can be used. The distribution boxes are constructed according to IEC 61439.

## Contact Us

For more information, pricing, or custom network solutions, please contact us:

Website: <https://www.hashherbcafe.co.za>

Email: [hello@hashherbcafe.co.za](mailto:hello@hashherbcafe.co.za)

Phone: +27 63 814 7295

Address: 15 Galaxy Road, Linbro Business Park, Johannesburg, 2065, South Africa

This document is for informational purposes only. Specifications subject to change without notice.

