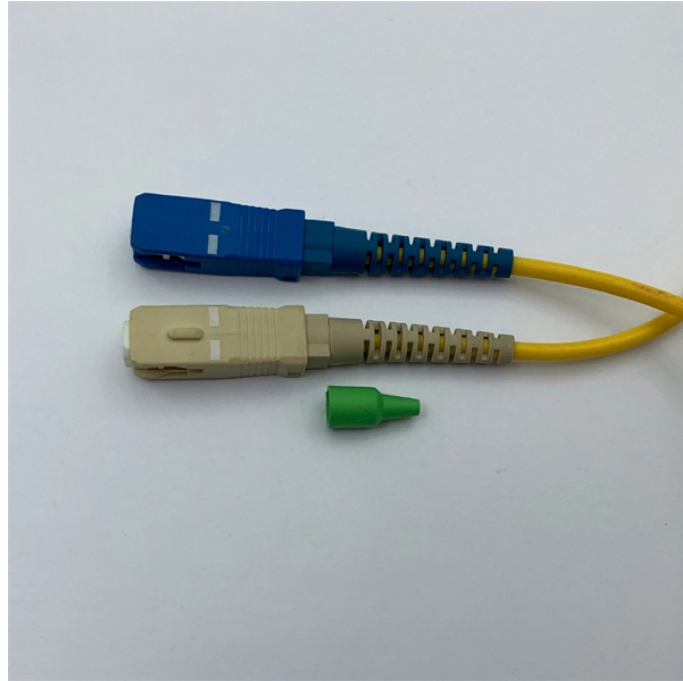


Dimensions of Cable Relay Frames for Power Systems



Dimensions of Cable Relay Frames for Power Systems



Planning relay room design? Learn how to place panels, manage cable trays, control temperature, and keep safe access space.



Panels shall be free standing, floor mounting type and shall comprise of structural frames completely enclosed with smooth finished, cold rolled sheet steel of thickness not less than 3 mm for all weight ...



The relay provides main protection for over-head lines and cable feeders in distribution networks. The relay is also used as back-up solidly earthed networks. Once the standard configuration relay has ...



Above dimensions include the 1" heat sinks on each side of the Relay Panel Note: A larger size Relay Panel Box might be required if optional breakers or a disconnect is required.



The basis for the mounting systems, which are modular systems, are equipment frames with an overall width of 19" and varying height. The height module U (1U= 44,45 mm = 1,75") and width ...



Our racks are offered in either high grade aluminum or steel and support up to 1,000 lbs. of standard 19 Inch EIA equipment. Available in multiple heights, these racks ...



Steelcase Relay Modular Power System is the power you need in a smart, adaptable package. Equipped with a disconnect button to make reconfiguration fast and easy, this powerful solution ...



4-Post, 19" Relay Rack Black, rack units identified, integrated ladder tray mounting holes



They consist of apparatus bars, a 19" equipment frame, terminal bases, various flush mounting cases, and sockets. The sockets, crimped to the insulated cables, are used for connection within the ...



The relay shall have suitable communication facility for connectivity to SCADA. The relay shall be capable of supporting IEC-60870-5-103 for station with SCADA compatible and IEC-61850 protocol ...



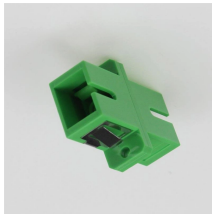
3" Deep Equipment Racks with Cable Managers Black; includes (2) vertical cable managers



This SEC Distribution Material Specification (SDMS) specifies the minimum technical requirements for design, engineering, manufacture, inspection, testing and performance of Relay and Control Panels ...



The required wire sizes and lengths for high-voltage (>30 V) Relay Outputs are determined by the load connected to the relay, and local, national or regional electrical codes.



Front access panels shall have additional hinged frame inside the outer glass door for mounting of equipment. The hinged frame shall be able to rotate at least 150 degree during opening. The hinged ...

Contact Us

For more information, pricing, or custom network solutions, please contact us:

Website: <https://www.hashherbcafe.co.za>

Email: hello@hashherbcafe.co.za

Phone: +27 63 814 7295

Address: 15 Galaxy Road, Linbro Business Park, Johannesburg, 2065, South Africa

This document is for informational purposes only. Specifications subject to change without notice.

