

Device for sensing the location of optical fibers



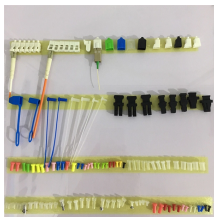
Device for sensing the location of optical fibers



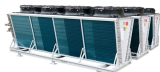
Optical fibers and its derived optical devices, including light sources, amplifiers, detectors, modulator, etc., are the main hardware of the optical fiber sensing system, which determine the sensing ...



This chapter first introduces the basis of optical transmission and sensing - optical fibers - then compares the semiconductor and fiber laser light sources and amplifiers and briefly discusses ...



Learn all about various sensors—including fiber optic sensors, photoelectric sensors, laser sensors, and contact sensors—with detailed information on measurement principles and applications.



Planck Sensing provides advanced distributed fiber optic sensing devices including DTS and DAS systems for monitoring and measurement applications across industries.



It includes OTDR, which measures the presence and location of optical fiber breaks and losses, as well as R-OTDR and B-OTDR, which read information about backscattered light generated when light ...



From expert consultation to seamless integration and long-term support, our services ensure the success of your fiber optic sensing solution. Engineered for reliability and performance, our fiber optic ...



Distributed Optical Fiber Sensing (DFOS) transforms standard fiber optic cables into powerful sensors capable of detecting temperature, strain, and acoustic signals at thousands of measurement points ...



Learn how fiber optic sensing technology, including distributed acoustic sensing (DAS), distributed temperature sensing (DTS), and distributed temperature and strain sensing (DTSS), delivers real ...



From energy and transportation to agriculture and cybersecurity, fiber sensing is quietly revolutionizing industries with applications once thought impossible. In this article, the authors ...



Fiber optic sensing works by measuring changes in the “backscattering” of light occurring in an optical fiber when the fiber encounters vibration, strain or temperature change.

Contact Us

For more information, pricing, or custom network solutions, please contact us:

Website: <https://www.hashherbcafe.co.za>

Email: hello@hashherbcafe.co.za

Phone: +27 63 814 7295

Address: 15 Galaxy Road, Linbro Business Park, Johannesburg, 2065, South Africa

This document is for informational purposes only. Specifications subject to change without notice.

