

Customs Declaration Air-Cooled Switch 1 6T



Customs Declaration Air-Cooled Switch 1 6T



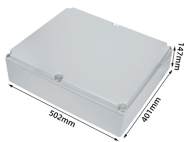
Failure to declare such items to a Customs and Border Protection Officer/ Customs and Border Protection Agriculture Specialist/Fish and Wildlife Inspector can result in penalties and the items may ...



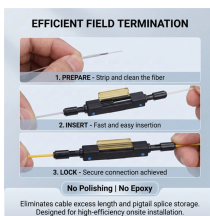
The USITC has not yet received further direction to modify the HTS at this time; therefore, the IEEPA duties remain listed until further notice. The links below correspond to the various sections in the ...



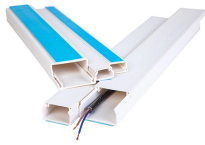
9903.94.05: Applies to parts of passenger vehicles (sedans, sport utility vehicles, crossover utility vehicles, minivans, and cargo vans) and light trucks classifiable in the provisions of ...



Experts spend years learning how to properly classify an item in order to determine its correct duty rate. For instance, you might want to know the rate of duty of a wool suit. A classification ...



Form 6059B Customs Declaration in English and Fillable. This form can be now be filled out prior to or during your travel and be filled out by typing (instead of hand written) and then printed ...



Any person knowingly making a false declaration is subject to a fine of not more than \$10,000 or imprisonment for not more than 5 years or both (18 U.S.C. 1001).



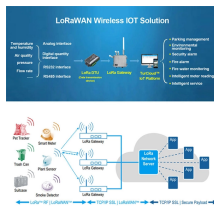
Instead, the “1.6T Data Center Switch” caught the team's eye. You can see that the Delta DC-90640 is a 3U switch with 2U dedicated mostly to the 64-ports of 1.6TbE. Since this is air cooled, ...



AUTOMOBILE PARTS HTS LIST U.S. note 33 to subchapter III of chapter 99 subdivision (g) heading 9903.94.05 and (h)



This ruling is being issued under the provisions of Part 177 of the Customs and Border Protection Regulations (19 C.F.R. 177). A copy of the ruling or the control number indicated above should be ...



Yes, used passenger vehicles and trucks are subject to the Section 232 duties pursuant to the Proclamation, except those manufactured in a year at least 25 years prior to the year of the date of ...

Contact Us

For more information, pricing, or custom network solutions, please contact us:

Website: <https://www.hashherbcafe.co.za>

Email: hello@hashherbcafe.co.za

Phone: +27 63 814 7295

Address: 15 Galaxy Road, Linbro Business Park, Johannesburg, 2065, South Africa

This document is for informational purposes only. Specifications subject to change without notice.

