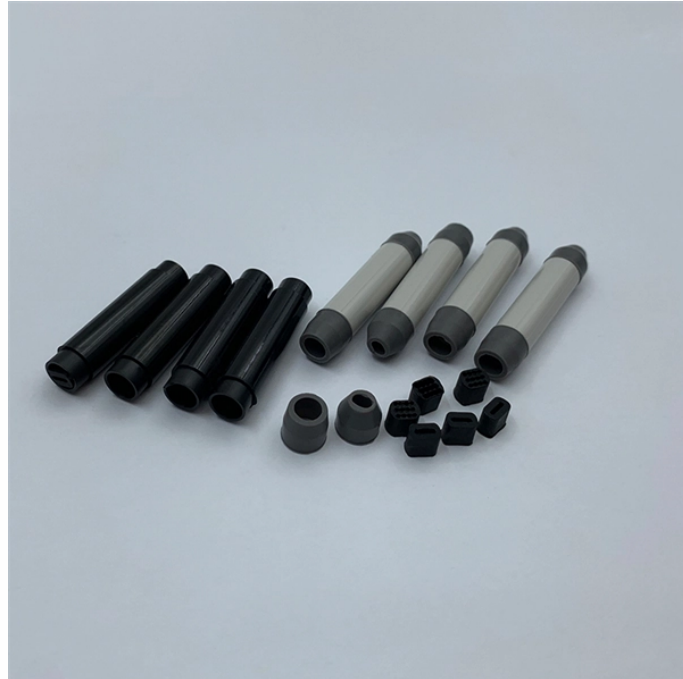


## Customization Process for New LX 5 Connectors for Carrier Backbone Networks



### Overview

This document provides point list information for networking Lx5 relay panel controllers to a Building Automation System (BAS) using the BACnet MSTP or N2 data communication protocol. 5 is a high performance connector which meets the highest standards by excellence in design and manufacturing processes. 5mm ferrule for higher port density. Push-pull locking mechanism for secure and easy connections. You are browsing HIGHLIGHT's. LX. The LX5 fiber connector has a shutter over the end of optical fiber, the specification of LX-5 fiber cables and connectors are defined as per. Amphenol offers a complete line of fiber optic connectors and adapters including SMA, ST, FC, SC, LC, LX. XT-LB) (drv\_gen5) Installation and Start-up Guide ©2024 Carrier. Page 2 Verify that you have the most current version of this document from [www.](http://www.)

## Customization Process for New LX 5 Connectors for Carrier Backbon



For advanced Lx5 programming, including LPPK and AppLoader software instructions, refer to USB Tech Kit User Guide. For Lx5 hardware location and configuration as well as EIA-485 network ...



Open your computer's wireless network display to view your available wireless networks. NOTE The XT-LB only supports the 5 GHz band and not the 2.4 GHz band. Connect to the wireless network using ...



LX.5 connectors are designed for precision alignment and stability, with a push-pull locking mechanism that simplifies installation and maintenance, especially in tight spaces.



The die-cast version was designed to meet the growing need for connectors to assist in preventing excessive EMI leaks from front panels in telecommunication and data communication equipment.



This document discusses HUBER+SUHNER's LX.5 fiber optic connector portfolio. It provides details on: 1) The LX.5 connector which offers high packing density, performance, reliability, safety and flexibility ...



This document discusses HUBER+SUHNER's LX.5 fiber optic connector portfolio. ...



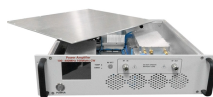
By allowing two fibers instead of one to fit into the standard SC adapter footprint, the LX.5 doubles the density of fiber termination equipment. The LX.5 was developed with carrier-class reliability to ensure ...



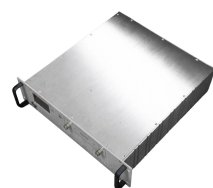
Color coding system The new color coding system allows fast and secure installation of the connector and the adapter. It ensures mating without risk of confusion. Simplex clips can be used to mark ...



We have developed a complete workflow for the fiber optic products test, from raw materials, components, to the end products. Testing is throughout the pre-manufacturing stage, manufacturing ...



Today, packing density is more important than ever. The LX.5-connector, based on the proven 1.25 mm ferrule technology, is the only standardized small form factor connector combining high packing ...



LX.5 is a high performance connector which meets the highest standards by excellence in design and manufacturing processes. Only high quality and high precision materials are used to guarantee ...

## Contact Us

For more information, pricing, or custom network solutions, please contact us:

Website: <https://www.hashherbcafe.co.za>

Email: [hello@hashherbcafe.co.za](mailto:hello@hashherbcafe.co.za)

Phone: +27 63 814 7295

Address: 15 Galaxy Road, Linbro Business Park, Johannesburg, 2065, South Africa

This document is for informational purposes only. Specifications subject to change without notice.

