

Customization Process for 6-Core Figure-8 Optical Cables Used in Hospitals



Customization Process for 6-Core Figure-8 Optical Cables Used in H



The design and workmanship of COTS items should be evaluated and modified as required to ensure that the use of COTS in wiring harnesses and cable assemblies meets contract performance and ...



Our custom fiber optic cables for medical devices and assemblies are specifically designed and manufactured to meet the rigorous demands of medical applications, from robot-assisted screenings ...



HCXtreme® Optical Fiber technology addresses the problem of fiber failure due to tight bending of optical fiber under power. This optimized fiber design reduces bend loss and offers superior ...



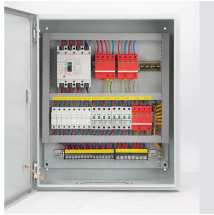
Innofiber supplies engineered photonic solutions to the medical and life sciences markets that meet standard protocols, satisfy stringent demands, minimize issues to meet a successful time-to-market ...



OSE Optics offers custom fiber optic cable manufacturing with precision alignment, fast prototyping, and quality control. Contact us to discuss your project.



Since we have an independent design team (10+ members), we accept all forms of customization, you just give us ideas or even just a word, and we can manufacture your ideal fiber optic cable for your ...



The instructions in this document explain how to prepare end openings of the Prysmian Figure 8 Fiber Optic Drop Cable for termination. The document also covers applications notes including the use of ...



Many medical device manufacturers are now turning to a new process, pioneered by Interplex, that focuses on rapid delivery of off-the-shelf, pre-configured and pre-tested medical grade cables, which ...



This extended guide dives deep into every facet of figure 8 fiber optic cable: its history and evolution, detailed construction, technical specifications, mechanical properties, advantages and limitations, ...



It incorporates both a steel messenger and the core of a standard optical fiber cable into a single jacket of figure-eight cross-section. The combination of strand and optical fiber into a single cable allows ...

Contact Us

For more information, pricing, or custom network solutions, please contact us:

Website: <https://www.hashherbcafe.co.za>

Email: hello@hashherbcafe.co.za

Phone: +27 63 814 7295

Address: 15 Galaxy Road, Linbro Business Park, Johannesburg, 2065, South Africa

This document is for informational purposes only. Specifications subject to change without notice.

