

## Custom Calibration of Benchtop Insertion Loss Meter



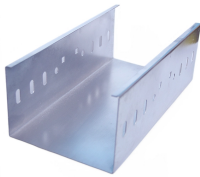
## Custom Calibration of Benchtop Insertion Loss Meter



The ILM-100 was designed to measure insertion loss on fiber optic components quickly and accurately.



Santec now offers a range Fiber Assembly Testing equipment with the acquisition of JGR Optics. Below we highlight seven products. For inquiries regarding these new benchtop instruments including ...



We have decades of expertise in OPTOTEST Calibration and can possibly repair the OPTOTEST OP930-SM SM Insertion /Return Loss Meter. Custom-Cal offers these services for the OP930-SM ...



It can be configured with up to 4 individual motor-driven PDLE units in a benchtop setup or up to 16 channels in a full rack-mount unit. The system includes a color touch screen on the front panel and a ...



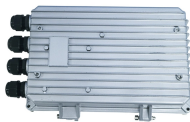
The ILM-100 was designed to measure insertion loss on fiber optic components quickly and accurately. The system has a built-in stabilized laser source for single-mode applications or LED source for multi ...



Viavi Solutions' PCT-rm series of benchtop insertion loss and return loss test solutions targets single fiber connector applications in the lab and in manufacturing.



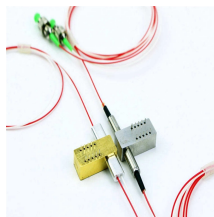
The detector's absolute calibration data is directly traceable to N.I.S.T. at the specified calibration wavelength and the specified power level, typically -10dBm.



We have decades of expertise in OPTOTEST Calibration and can possibly repair the OPTOTEST OP930-SM SM Insertion /Return Loss Meter. Custom-Cal offers ...



OZ Optics offers a turnkey, rugged and low cost benchtop digital multichannel polarization dependent loss emulator (PDLE) with high resolution, and high dynamic range. The built-in motor controlled ...



The OptoTest OP735 Benchtop Optical Power Meter can be configured with up to 4 channels and a mix of InGaAs, Silicon, and High Power Detectors. This unit is ideal as a compact, stand-alone power ...



The Insertion Loss Meter, ILM-100, was designed to measure insertion loss on fiber optic components quickly and accurately. The system has a built-in stabilized laser source for single-mode applications ...

## Contact Us

For more information, pricing, or custom network solutions, please contact us:

Website: <https://www.hashherbcafe.co.za>

Email: [hello@hashherbcafe.co.za](mailto:hello@hashherbcafe.co.za)

Phone: +27 63 814 7295

Address: 15 Galaxy Road, Linbro Business Park, Johannesburg, 2065, South Africa

This document is for informational purposes only. Specifications subject to change without notice.

