

## Coupler Collimating Lens



## Coupler Collimating Lens



A coupler is a mechanical or electronic device that establishes a connection between two separate systems or components. This connection allows the transfer of power, motion, or ...



Husky - 1/4 in. Universal Coupler - This universal coupler is designed to fit in most popular styles, and features a female fitting that allows for a direct connection to an air hose.



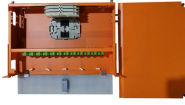
Our Polaris ® Kinematic Collimators offer high-quality collimation paired with long-term alignment stability. The Fiber Launch Platforms are ideal for coupling a free space laser into a single mode, ...



Gooseneck coupler fits a 2-5/16" ball and has 8" of adjustment to fit your application. The curved internal ball clamp creates a tight fit for the hitch ball. A protected hidden spring latch is durable and easy to use.



Didn't find any products that meet your requirements? Feel free to contact us for further technical support!



Collimating lenses are indispensable tools in achieving this objective. This article will explore the principles behind collimation, the design of collimating lenses, and their various applications across ...



This I/M Series Male/Female Coupler Kit is built to handle the toughest jobs and withstand harsh working environments. Constructed of high-strength steel, the quick coupler is rated for 300 PSI.



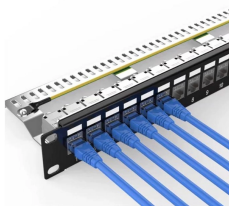
Choose from our selection of shaft couplers, including precision flexible shaft couplings, flexible shaft couplings, and more. Same and Next Day Delivery.



Each FiberPort includes an achromatic doublet or aspheric lens with an effective focal length ranging from 2.0 mm to 18.4 mm. They are available with FC/PC, FC/APC, or SMA fiber bulkheads.



Adjustable focus couplers are available with a variety of lens types and fiber types. Internal surfaces are angle polished and/or AR coated to minimize backreflection.



The GRIN lens can enhance the mode-field diameter of the input fiber to make the system less sensitive to misalignment and fabrication tolerance in the coupling process. Thus far, significant ...



SMA-Coupler allows accessories, such as collimating lenses or cosine receptors, to attach directly to a spectrometer without the need for fiber optic cables. Buy Now!



We manufacture couplings in a size range from 1/2" to 4" in a wide variety of materials including aluminum, ABS, PVC and engineered plastics. Our production and stocking program is tailored to ...



Shop for couplings, collars and adapters at Grainger and help enhance your operation by distributing power, improving flexibility and increasing safety.



A coupler in electronics is a component that transfers a signal or power from one circuit to another while keeping the circuits electrically separated. This isolation prevents unwanted current ...



To summarize, TECF can improve the coupling efficiency of a coupler, while dual lenses can better correct aberrations and improve efficiency compared with single lenses.



How measured fiber parameters help to choose the best coupling and collimation optics.



As well as coupling and collimating your optical fiber, it also enables you to enlarge or reduce your input beam, creating perfect input conditions for all subsequent beam shaping optics.



World's best-selling original locking grease coupler. Rated 10,000 PSI. Long-lasting rebuildable tool. Need help?

## Contact Us

For more information, pricing, or custom network solutions, please contact us:

Website: <https://www.hashherbcafe.co.za>

Email: [hello@hashherbcafe.co.za](mailto:hello@hashherbcafe.co.za)

Phone: +27 63 814 7295

Address: 15 Galaxy Road, Linbro Business Park, Johannesburg, 2065, South Africa

This document is for informational purposes only. Specifications subject to change without notice.

