

Cost of laying fiber optic cables in conduits



Overview

The cost to install fiber optic cable ranges from \$1.50 to \$42 per foot, with installation costs accounting for 60-80% of total project expenses. According to the Fiber Broadband Association's 2025 report, median costs are \$8 per foot for aerial builds and \$18 per foot for. Homeowners and businesses typically pay for fiber optic cable installation based on distance, conduit needs, and labor. The main cost drivers include material type, run length, trenching or aerial work, and any required permits or inspections. With prices ranging from \$1 to over \$50 per linear foot, depending on the installation method. Whether you need singlemode, armored, or indoor plenum, this guide gives you the exact cost per foot of fiber optic cable — including installation — so you can budget without guesswork. You should account for permit. If you install underground fiber, pricing your HDD work right is the fastest way to protect margins without sacrificing win rate.

Cost of laying fiber optic cables in conduits



Homeowners and businesses typically pay for fiber optic cable installation based on distance, conduit needs, and labor. The main cost drivers include material type, run length, trenching ...



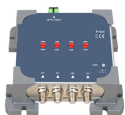
In this guide, you'll get data-driven ranges you can reference in bids, an illustrative cost breakdown, and a step-by-step pricing framework you can hand to your estimator.



The price or cost to install fiber reflects material choices, labor hours, and local regulations, with per-mile and per-ft metrics common in bids. This guide presents practical ranges in ...



Discover the average fiber optic cable installation cost, including key factors that impact pricing, and learn how to budget for your home project.



Whether you need singlemode, armored, or indoor plenum, this guide gives you the exact cost per foot of fiber optic cable — including installation — so you can budget without guesswork.



Prices can range from \$1 to \$50+ per linear foot depending on the method and complexity. The initial cost of installing fiber optic cables can vary depending on the chosen ...



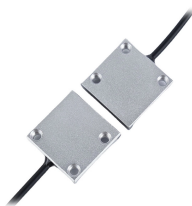
This fiber running cost guide provides practical ranges in USD with explicit low, average, and high estimates. It helps buyers plan budgets, compare contractor quotes, and anticipate drivers such as ...



Discover the complete cost to install fiber optic cable, including installation methods, labor expenses, and factors affecting the cost to lay the cable.



For full property installations with underground trenching, conduit, and handoffs to internal networks, costs commonly fall in the \$15,000-\$40,000 range. When feasible, aerial drops ...



Assess various factors influencing fiber optic installation costs. Learn how location, materials, and labor affect overall pricing for a seamless setup.

How Much Does A Fiber Optic Installation Cost? Factors Influencing Fiber Optic Cable Installation Prices Upfront Costs vs. Monthly Fees How to Install Fiber Optic Networks Cost Differences Between Aerial & Underground Installations Scalability & Roi in Fiber Optics Contact The Network Installers On average, the installation or initial cost for fiber optic cable can range from hundreds to thousands of dollars per mile for aerial installation and \$5,000 to \$20,000 per mile for underground installation. Installing or “overlashing” aerial fiber optic cable typically costs \$8 to \$12 per linear foot. When considering the cost per mile, this tran... See more on the network installers

```
.b_imgcap_alttitle p strong,.b_imgcap_alttitle .b_factrow
strong{color:#767676}#b_results .b_imgcap_alttitle{line-height:22px}.b_imgcap_altit
le{display:flex;flex-direction:row-reverse;gap:var(--mai-smtc-padding-card-nested-
default)}.b_imgcap_alttitle .b_imgcap_img{flex-shrink:0;display:flex;flex-
direction:column}.b_imgcap_alttitle .b_imgcap_main{min-
width:0;flex:1}.b_imgcap_alttitle .b_imgcap_img>div,.b_imgcap_alttitle .b_imgcap_img
a{display:flex}.b_imgcap_alttitle .b_imgcap_img img{border-radius:var(--mai-smtc-
corner-card-default)}.b_imagePair.square_s>
ner{width:50px}.b_imagePair.square_s{padding-left:60px}.b_imagePair.square_s>
ner{margin:2px 0 0 -60px}.b_imagePair.square_s.reverse{padding-left:0;padding-
right:60px}.b_imagePair.square_s.reverse> ner{margin:2px -60px 0
0}.b_ci_image_overlay:hover{cursor:pointer}
sightsOverlay,#OverlayIFrame.b_mcOverlay sightsOverlay{position:fixed;top:5%;left:
5%;bottom:5%;right:5%;width:90%;height:90%;border:0;border-radius:15px;margin:0
;padding:0;overflow:hidden;z-index:9;display:none}#OverlayMask,#OverlayMask.b_
mcOverlay{z-index:8;background-color:#000;opacity:.6;position:fixed;top:0;left:0;wid
th:100%;height:100%}bhumicalculator
```

Contact Us

For more information, pricing, or custom network solutions, please contact us:

Website: <https://www.hashherbcafe.co.za>

Email: hello@hashherbcafe.co.za

Phone: +27 63 814 7295

Address: 15 Galaxy Road, Linbro Business Park, Johannesburg, 2065, South Africa

This document is for informational purposes only. Specifications subject to change without notice.

