

## Corrosion of Explosion-proof Distribution Box Body



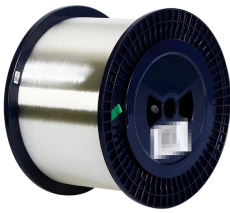
### Overview

This content introduce how to maintain the distribution panel, explosion proof distribution board and the explosion proof control station with different method. That's why explosion-proof distribution boxes and corrosion-resistant cables aren't just equipment; they're silent guardians keeping thousands of workers safe every single day. Picture this: Gulf of Mexico, offshore drilling platform. ) Enclosure: 304 stainless steel, 316L stainless steel and Q235. They offer safe protection even when they are exposed to extreme environmental conditions, aggressive chemical media or high mechanical stress. These. Product development, Exhibition information, Marketing development, Company Events, etc.

## Corrosion of Explosion-proof Distribution Box Body



In these frontiers, explosion-proof distribution boxes and corrosion-resistant cables are technological bodyguards—unassuming but critically positioned between routine operations and catastrophe.



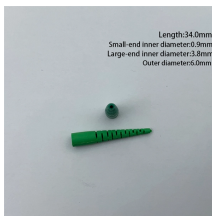
The distribution box adopts a stainless steel box body (made of Baosteel 304 or above), with a natural color of stainless steel and a thickness of no less than 2.0mm



Anti-corrosion paint should be applied.  
Consequences: the wiring in the lighting explosion-proof distribution box (board) is messy, and the second board in the box presses against the pipe opening, ...



·Equipped with specialized hinge structure, which can prevent the flameproof joints from damage when opening and closing the box, and greatly prolong the service life of box. The boxes can be combined ...



explosion proof distribution panel and control station are generally installed in places with harsh environments. They generally use cast iron casings. Chemical dust can chemically react with ...



BXM (D) 8030 series explosion-proof anti-corrosion lighting (power) distribution box



Corrosion and mechanical impact resistance are key protection features in explosion-proof distribution boxes. The construction uses materials that resist rust and damage.



Polyester distribution boxes have been of great advantage in many industrial plants. They offer safe protection even when they are exposed to extreme environmental conditions, aggressive chemical ...



Constructed from corrosion-resistant, copper-free aluminum, the GUB series terminal boxes and junction boxes are available in a variety of sizes and configurations to suit different installation needs.

## Contact Us

For more information, pricing, or custom network solutions, please contact us:

Website: <https://www.hashherbcafe.co.za>

Email: [hello@hashherbcafe.co.za](mailto:hello@hashherbcafe.co.za)

Phone: +27 63 814 7295

Address: 15 Galaxy Road, Linbro Business Park, Johannesburg, 2065, South Africa

This document is for informational purposes only. Specifications subject to change without notice.

