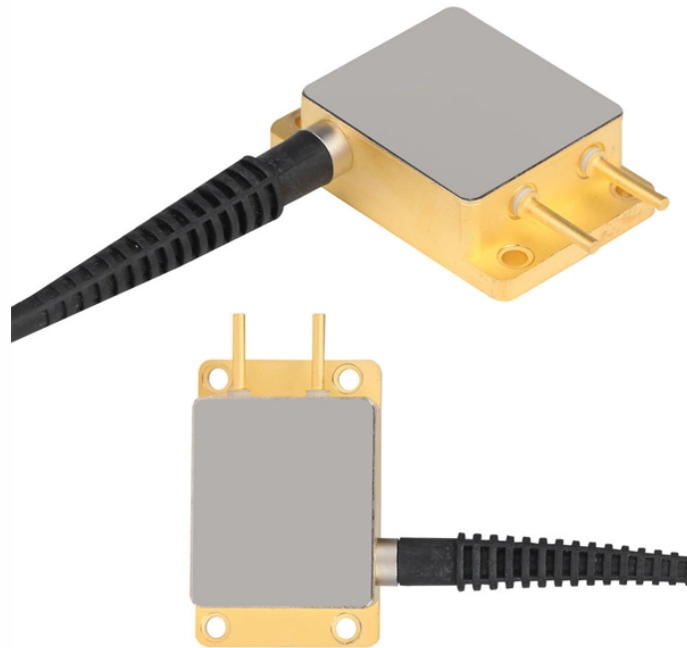


# Core Switch Stacking Boards



## Overview

Stackable switches are connected via DAC cables, optical transceivers or specialized stack cables. Does the core connect to a disti layer or collapsed backbone or something else?

Depending on what the core is actually doing will. Stacking: Stacking allows multiple physical switches to connect and operate as a single, unified logical switch for simplified management and scalability. This section explains stacking and its related concepts, identification methods, and the benefits of managing multiple switches as a single. "I turned off my single point of failure and everything went down". Get rid of single points of failure or do this sort of work out of hours. Leverage meraki warm spare switching. In some cases, power redundancy options are available for stacks to survive power supply failures as well. Now you wonder what are these access layer switches?

thatActually, there are three types of switches in a LAN.

## Core Switch Stacking Boards



Switch stacking connects multiple switches into one logical unit. Learn its basics, benefits, configuration, and how it differs from MLAG.



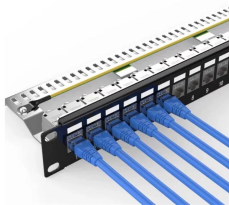
By making a pile of switches, network executives can guarantee that assuming one switch comes up short, the other changes in the stack can keep on working, which assists with limiting the ...



Determining How to Stack Stacking to Fit Your Network Meraki switches have multiple options to best fit your network deployment. This article discusses the switch stacking features that can be leveraged ...



Stacking at the core (regardless of vendor) is universally a bad idea. If they're not wanting to buy all new expensive gear, you have two options, both with advantages and disadvantages. Split the stack into ...



Stacking switches is not akin to an HA pair. Stacking turns multiple switches into a single unit for management and provides improved throughput across the switches.



I'm going to use two XOS based core switches, and a pair of X435 switches in my example below, you can extrapolate from there. Setting up an MLAG (Multi-Chassis Link ...



My question is if i stack them would i configure the ACL's and Routing etc on just one switch and use the second for the fiber as a layer 2 switch or do i need to configure both for layer3?



Stacking is the process of connecting multiple physical network switches together, so they function as a single, logical switch. This is achieved by using stacking-capable switches which ...



Switch stacking is a feature of certain Cisco access layer switches which allows for the creation of a single logical device from many individual devices via a backside stack port connected ...



There are various approaches to connect multiple switches, among which switch stacking vs trunking vs uplink are the most prevailing ones. This post aims to elaborate on the three switch connection ...

## Contact Us

For more information, pricing, or custom network solutions, please contact us:

Website: <https://www.hashherbcafe.co.za>

Email: [hello@hashherbcafe.co.za](mailto:hello@hashherbcafe.co.za)

Phone: +27 63 814 7295

Address: 15 Galaxy Road, Linbro Business Park, Johannesburg, 2065, South Africa

This document is for informational purposes only. Specifications subject to change without notice.

