

# Core Switch Multicast Anomaly



## Overview

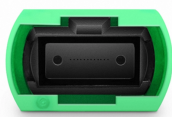
On the wired side, Port Anomaly introduces a proactive metric for identifying potential trouble before it escalates. By monitoring port flapping, loops, and related issues, admins receive early notifications through Alarm Manager, helping maintain a stable backbone. It's a long story but I'll keep it short. The network is as below: Third Floor (core switch) ISP Internet Router (GATEWAY DEVICE for all 30 vlans) Stack 1 : 5 x. Essentially, all of the AV equipment sits on a stack of MS225 switches which are connected via Port-Channel to a Meraki managed Catalyst 9300 core switch. When we connect the devices directly to the source VLAN, everything works fine; however, we cannot receive the multicast service on other VLANs. The IPTV Multicast service is provided. Maybe someone have a good multicast experience with DELL, juniper, HP, arista, Extreme, Nokia?

From hardware standpoint, i need a pair of switches, with at least 8 ports 10G sfp+, and 24 ports 1G each. ipforwarding and ipmcfowarding is enabled on X670 for both VLANs. This is a simple Multicast distribution setup with the M4100-26-POE as the core switch for multi-casting.

## Core Switch Multicast Anomaly



I am looking to upgrade our aging multicast core switches for new ones, and maybe someone from their experience could recommend which vendor has the most complete multicast ...



We are pushing 8 hi-def videos on our network. Few months ago, we started to see a lot of CRC errors on our switches. Per Meraki tech support, we turned off Flood unknown multicast traffic in switch ...



Discover Network 9.5 with Channel AI for smarter WiFi optimization, enhanced multicast efficiency, refined roaming for Apple devices, and Port Anomaly for proactive wired stability—built to ...



Since the source and receiver are located in different VLANs, you need a multicast protocol such as PIM. Or you can also consider to use the MVR (Multicast VLAN Registration) over ...



We are currently facing an issue when attempting to transmit IPTV Multicast between different VLANs in our network. When we connect the devices directly to the source VLAN, ...



With this configuration, I would expect all multicast streams to be contained within the switch stack as all equipment sending and consuming streams are connected there.



You can verify this by using dm raw commands, when the switch is experiencing high CPU, the multicast traffic is seen hitting the CPU as well. However, this is only an "orientated guess" ...



At the moment we are fault finding why multicast traffic doesn't reach Switch Stack 02 from Core Switch 01. Having looked at the mcast counters, there seems to be an issue with mcast traffic ...



Timers are suggested not to be modified, but the reality might differ: an example is the tv that is linked to the room power instead always on, so each time a guest goes out and take off the ...



I have taken over a new site/client and have run into an issue where a device Connected to a N2048 switch is sending out UDP packets on ports 319 and 320 and a devices listening on ...



This is a simple Multicast distribution setup with the M4100-26-POE as the core switch for multicasting. The downstream network is not under my domain but consists of Aruba switches.

## Contact Us

For more information, pricing, or custom network solutions, please contact us:

Website: <https://www.hashherbcafe.co.za>

Email: [hello@hashherbcafe.co.za](mailto:hello@hashherbcafe.co.za)

Phone: +27 63 814 7295

Address: 15 Galaxy Road, Linbro Business Park, Johannesburg, 2065, South Africa

This document is for informational purposes only. Specifications subject to change without notice.

