

Connection Interfaces of Core Switch



Overview

It is a powerful backbone switch in the center of the network core layer, which centralizes multiple aggregation switches to the core and implements LAN routing. While edge switches handle user connectivity and routers manage external internet traffic, the core switch acts as the central nervous system bridging your entire local environment. To simplify this. This is my first time to configure core switch on packet tracer and still confusing in core switch how to interconnect all the core switch?

and I can't put any IP ADDRESS for each port Regards 01-22-2019 04:48 AM
switchport trunk encap dot1x switchport mode trunk 01-22-2019 05:23 AM The diagram only. In this example, Internet access traffic of users passes through the BRAS, and then reaches the egress network of the firewall through the core switch.

Connection Interfaces of Core Switch



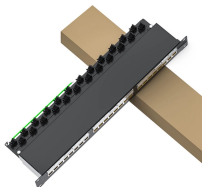
Explore the core switch's role as the backbone of your network. Discover key differences, uses, and insights into layer 3 core switch technology.



Core switches are optimized for high-speed routing and forwarding, operating at Layer 3 of the network model. They feature high-speed uplinks but have a lower port density because they ...



Discover what a core switch does in a 3-tier network model. Learn about ASIC routing, collapsed core vs dedicated core topologies, and SMB sizing guides.



Core switches should have features like link aggregation, VLAN, and quality of service (QoS) to perform better. It's also important that the switch works with higher capacity parts.



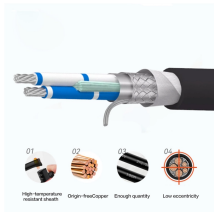
Core switches are defined as high-capacity switches located at the top of a cloud data center network, connecting aggregation switches and providing interfaces to wide area networks (WANs).



It is a powerful backbone switch in the center of the network core layer, which centralizes multiple aggregation switches to the core and implements LAN routing. The normal edge switch is in ...



Unlike access switches, which connect directly to end-user devices, the core switch focuses on aggregating and routing traffic between other switches, minimizing latency and ...



Traffic passing through the BRAS is classified into education network traffic, ISP1 traffic, and ISP2 traffic. Therefore, you are advised to configure corresponding VPN instances on the core switch to isolate ...



I suggest you create SVIs on the core switches, establish port-channels between the core switches and create a Layer3 mesh between them advertising routes via IGP.



There are different types of enterprise switches that perform various roles in these layer-based or hierarchical ethernet networks. This white paper introduces the following three types of network ...

Contact Us

For more information, pricing, or custom network solutions, please contact us:

Website: <https://www.hashherbcafe.co.za>

Email: hello@hashherbcafe.co.za

Phone: +27 63 814 7295

Address: 15 Galaxy Road, Linbro Business Park, Johannesburg, 2065, South Africa

This document is for informational purposes only. Specifications subject to change without notice.

