

Connecting the power cord to the primary distribution box



Connecting the power cord to the primary distribution box



Phase 3's Powersafe Sequential Mating Box controls the connection sequence of incoming / outgoing high current cable connections. The sequence ensures that the Earth connection is made first and ...



This guide is intended for users who have an understanding of the engineering fundamentals of power cable systems. This guide includes many tables, equations, and related data for the convenience of ...



While designing the construction of a primary distribution substation, there are a number of different busbar arrangement alternatives for both voltage levels.



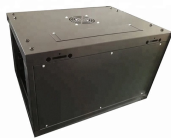
If the primary cable is installed in conduit, or an insulating jacket is used, the NESC may require either a one foot separation between the primary cable and the other facilities, or the addition of a bare ...



Wiring Direction: Wiring between the main circuit breaker and each branch circuit breaker in the box generally goes on the left, and the wiring out of the distribution box generally goes on the ...



All MTE infrastructure including but not limited to conduits, manholes, box pads, and pull boxes must have a minimum horizontal separation of 36" from gas and water lines.



Hey, in this article we are going to see the Single Phase Distribution Box Wiring Diagram and Connection Procedure. A distribution board or distribution box is where the main power supply is ...



The simplest primary distribution system consists of independent feeders with each customer connected to a single feeder. Since there are no feeder interconnections, a fault will ...



These instructions define the areas in which assistance may be given to a primary customer to coordinate the customer's and DTE Electric systems, to increase the operating safety of high voltage ...



Connecting wires to your home distribution box? See how electricians do it professionally! From selecting the right wire gauge to safely connecting the main ...



In this video, we'll walk you through the essentials of wiring your home for electricity, ensuring you understand every step of the process.

Contact Us

For more information, pricing, or custom network solutions, please contact us:

Website: <https://www.hashherbcafe.co.za>

Email: hello@hashherbcafe.co.za

Phone: +27 63 814 7295

Address: 15 Galaxy Road, Linbro Business Park, Johannesburg, 2065, South Africa

This document is for informational purposes only. Specifications subject to change without notice.

