

Congo SFP Optical Module 200G



Congo SFP Optical Module 200G



The 200g QSFP56 modules produced by SULITON are suitable for most switch brands on the market, such as MSA, Cisco, Huawei, Juniper, Dell, Edge-Core and other switches.



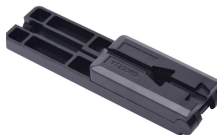
Use Juniper's portfolio of 2 x 100G optical transceivers to service point-to-point 200G interconnections or breakout to interoperate with widely deployed legacy four-wavelength 100G interfaces. Our 2 x 100G ...



NADDOD's 200G modules come in QSFP56, QSFP-DD form factor shape, support 200G InfiniBand, Ethernet and are used over Single-Mode and Multi-Mode Fiber as a media.



FS provides 1/2/4G transceivers modules in SFP form factor, supporting transmission distances from 100m to 120km over SMF/MMF fiber and enabling low power and cost-effective connectivity solutions.



The 200G QSFP-DD SR8 Transceiver is designed to transmit and receive serial optical data links up to 28 Gb/s data rate (per channel) over multi-mode fiber. It is a small-form-factor hot pluggable ...



JIAXUN Jiaxun (Huizhou) Intelligent Technology Co., Ltd. Mainly Focuses on LAN Transformers, Filters, RJ45 Ethernet Connector, Optical Transceivers, SFP Module, SFP Cage, And PLC-IOT ...



Testing Modules & Tools Smart Optical Transceiver BOX GIGALIGHT provides the smart box tools for online coding of SFP, XFP, SFP+, QSFP+, and QSFP28 optics, as well as wavelength tuning for 10G ...



Boost network performance with 200G optical transceivers. Designed for data centers, 5G, and cloud infrastructure, our QSFP56 modules deliver low latency, high reliability, and seamless compatibility.



Broadex Technologies' high performance and cost effective 200G Optical Transceiver Modules are built utilizing our innovative COB technology in a QSFP56 form factor.



For operation over MMF, Arista offers the QSFP-200G-SR4, which uses parallel multimode optical fiber using an MPO-12 optical connector - i.e. the same fiber type and fiber ...

Contact Us

For more information, pricing, or custom network solutions, please contact us:

Website: <https://www.hashherbcafe.co.za>

Email: hello@hashherbcafe.co.za

Phone: +27 63 814 7295

Address: 15 Galaxy Road, Linbro Business Park, Johannesburg, 2065, South Africa

This document is for informational purposes only. Specifications subject to change without notice.

