

Configuring network segments for Huawei core switches



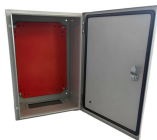
Configuring network segments for Huawei core switches



Small- and Mid-Sized Campus Networks This section uses the S2750 as an access switch (ACC1), S5700 as a core switch (CORE), and an AR series router as an egress router (Router) as examples ...



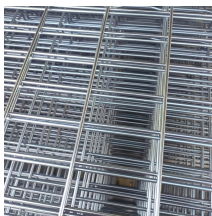
In this scenario, IP addresses of the interfaces connecting the core switch to the BRASs and firewalls and OSPF need to be configured on the core switch, so as to implement connectivity ...



Configuring a Huawei switch isn't just about plugging in cables and ticking boxes—it's about building a network that's resilient, efficient, and ready to grow.



This text is a guide detailing Basic Command Line Interface (CLI) Commands on Huawei brand switches. It provides step-by-step instructions for users to perform fundamental network configuration ...



☐☐ Learn how to fully configure a Huawei S5700 Series switch step-by-step using real CLI commands!



Segment routing is designed based on source routes. Using the source node alone can control forwarding paths over which packets are transmitted across a network.



As shown in the following figure, the S9700 Terabit routing switches function as core switches in a data center and use firewall and load balancer boards to ensure security and load balancing.



In this lesson we will learn Huawei VLAN Configuration on Huawei Switches. VLAN Configuration is one of the key lessons for Huawei HCNA.



The document provides configuration instructions and commands for basic switch configuration using Huawei switches. It covers topics such as changing the ...



With the wizard-based network configuration function, the interconnection subnet, interconnection VLAN, and route between the core switch and the gateway are automatically configured, greatly improving ...

Contact Us

For more information, pricing, or custom network solutions, please contact us:

Website: <https://www.hashherbcafe.co.za>

Email: hello@hashherbcafe.co.za

Phone: +27 63 814 7295

Address: 15 Galaxy Road, Linbro Business Park, Johannesburg, 2065, South Africa

This document is for informational purposes only. Specifications subject to change without notice.

