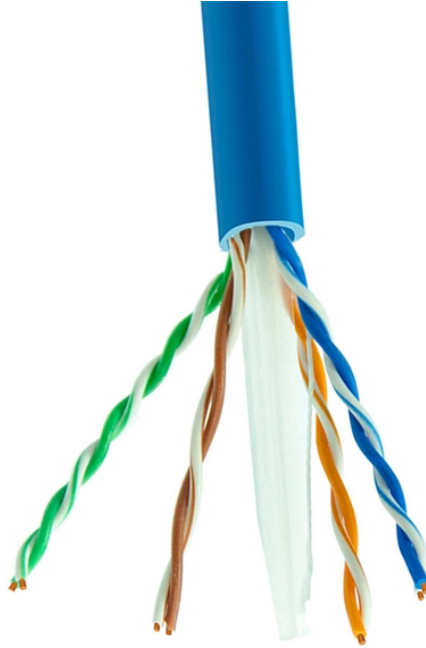


Configuration and Distribution of Air Switches in Distribution Boxes



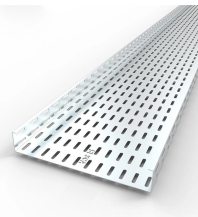
Configuration and Distribution of Air Switches in Distribution Boxes



This article explains what a distribution box does, typical configurations, sizing guidelines, installation considerations, and maintenance tips to help facility owners and homeowners ...



Wiring Direction: Wiring between the main circuit breaker and each branch circuit breaker in the box generally goes on the left, and the wiring out of the distribution box generally goes on the ...



In this course we will focus on the various design options pertaining to cooling and heating air distribution (item numbers 3 and 4 above). HVAC systems are of great importance to architectural ...



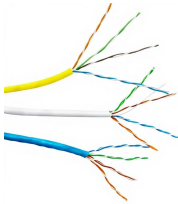
④ The wiring between the main air switch and each branch air switch inside the box usually goes on the left side, while the wiring for power distribution system outgoing lines usually goes on the right side.



Switches can come out of contact adjustment if a spindle bearing fails. Inertia rotating insulators pivot on double sealed stainless steel ball bearings at both the top and bottom of the ...



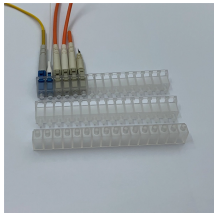
When the air switch is a three-phase switch, to figure out whether the incoming line is a three-phase circuit. If it is determined to be two-phase, it should be zero wire to zero wire, ground wire to the ...



The air circuit breaker, wiring wires, wiring ties, etc. in the box have been prepared and meet the design drawings and the installation requirements of the distribution box.



Eaton's Cooper Power™ series Type ED switch is a distribution enclosed single-pole air switch rated at 7.8 kV, 75 kV BIL, 400 and 600 A continuous current. The Type ED porcelain-housed disconnect ...



Detail of the technical design and configuration of individual switchgears, such as the technical data, detailed equipment lists for the individual panels and comprehensive circuit documentation, etc., can ...



Abstract: Information on the application, operation and maintenance of high-voltage fuses (above 1000 V and through 169 W), distribution enclosed single-pole air switches, fuse disconnecting switches, and ...

Contact Us

For more information, pricing, or custom network solutions, please contact us:

Website: <https://www.hashherbcafe.co.za>

Email: hello@hashherbcafe.co.za

Phone: +27 63 814 7295

Address: 15 Galaxy Road, Linbro Business Park, Johannesburg, 2065, South Africa

This document is for informational purposes only. Specifications subject to change without notice.

