

Configuration Standards for Finished Distribution Boxes




Overview

Check for proper IP/NEMA ratings and material quality. Ensure safe placement: install in dry, accessible areas with good ventilation and at appropriate height (typically ~1. Practice good wiring: secure grounding, neat cable management, proper insulation, and correct wire gauge and. Design requirements for low voltage distribution boxes cover NEC, IEC, and safety standards to ensure reliable, compliant electrical installations. Design requirements help you follow important standards like. NEC Article 314 establishes requirements for the installation and use of electrical boxes, conduit bodies, fittings, and handhole enclosures. It takes the incoming power and safely distributes it to different circuits throughout your building. Whether in a home or an industrial facility, this box keeps. JECT TO UPDATE AND MODIFICATION AT ANY TIME. PRINTED COPIES MAY NOT INCLUDE THE MOST UP-TO DATE STANDARDS, REFERENCES, OR REQUIREMENTS. TO EVERY CIRCUMSTANCE OR ELECTRICAL SYSTEM. SRP ENCOURAGES EACH USER TO CONSULT WITH ITS OWN TECHNICAL ADVISOR CONCERNING THE APPLICABILITY OF THESE TANDARDS TO. An outdoor electrical distribution box serves as the critical junction point where incoming power lines are split into


multiple branch circuits for outdoor installations, parking lots, building exteriors, and industrial facilities. Unlike standard junction boxes, these distribution systems must. This Code of Practice provides the details of the general principles to be applied to the design of distribution substations, including substations located at ground floor, basement, upper floor level including at high level in high rise building and outdoor areas.

Configuration Standards for Finished Distribution Boxes




50km/spool

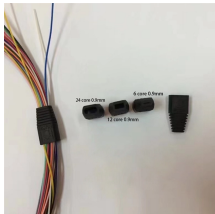
NEC Article 314 establishes requirements for the installation and use of electrical boxes, conduit bodies, fittings, and handhole enclosures.



The latest NEC updates prioritize adaptive solutions for modern energy demands. With homes now packing solar arrays, EV chargers, and smart-home systems, distribution boxes work harder than ...




TITLE BLOCKS ARE USED TO HOLD INFORMATION ABOUT THE BOOK, SECTION, AND STANDARD AND ARE LOCATED AT THE BOTTOM OF THE PAGE. "APPROVAL" REFERS TO ...



20 Amp/300V
3.0/3.6

Complete specification guide for outdoor electrical distribution boxes covering NEC Article 312 requirements, NEMA ratings, sizing calculations, and selection criteria for commercial and ...



Free-bending Tail Sleeve

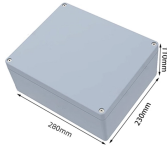
SC 2.0/3.0 LC 2.0/3.0 FC 2.0/3.0 ST 2.0/3.0

MPO(outside) 3.0/3.6 MPO(inside) 3.0/3.6

New medium voltage distribution systems shall typically utilize a looped-primary circuit served from a single source, with switching installed to provide a means of isolating a failed cable section while ...



You need to understand the main standards and codes that guide the safe design and use of low voltage distribution boxes. These rules help you meet legal requirements and keep your ...



Codes and standards are referenced throughout this UFC. Follow the guidance provided in UFC 1-200-01, Section 1-3.1 to establish the issue/version of the publication effective for the project.



You need to understand the main standards and codes that guide the safe design and use of low voltage distribution boxes. These rules help you meet ...



Explore a searchable database of US construction and building code. Code regulations are consolidated by state and city for easier navigation.



Learn how to install a distribution box safely and correctly. Covers wiring, placement, standards, and expert tips for a compliant setup.



Understand key IEEE standards for electrical enclosures—covering safety, grounding, shielding, and durability—and how to apply them in real projects.



Submit the following in accordance with Section 01 33 00. Include wiring diagrams and installation details of equipment indicating proposed location, layout and arrangement, control panels,...



This Code of Practice provides the details of the general principles to be applied to the design of distribution substations, including substations located at ground floor, basement, upper floor level ...

Contact Us

For more information, pricing, or custom network solutions, please contact us:

Website: <https://www.hashherbcafe.co.za>

Email: hello@hashherbcafe.co.za

Phone: +27 63 814 7295

Address: 15 Galaxy Road, Linbro Business Park, Johannesburg, 2065, South Africa

This document is for informational purposes only. Specifications subject to change without notice.

