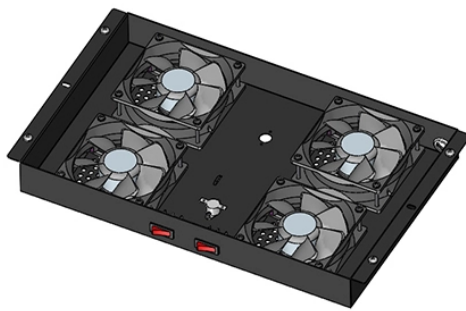


Configuration Scheme for LPO AI Server for Oil Pipeline Monitoring



Overview

This paper explores the development of an IoT-based system for the real-time monitoring and maintenance of energy and oil pipeline networks. The Global network for O&G pipeline is around 2,069,000 km and India has about 29,000 km of transmission lines, of which about 20,000 km comprise a high-pressure gas pipeline network. These high-pressure pipelines are cross-country lines passing through barren lands, agricultural land, undulating. Databricks offers a Lakehouse Decision model solution, which implements a modern lakehouse architecture for your gas pipeline network, integrating real-time analytics, historical data, and AI-driven insights to enable smarter, faster decisions. With the growing need for more efficient, safe, and sustainable pipeline operations, traditional monitoring methods are increasingly inadequate to address.

Configuration Scheme for LPO AI Server for Oil Pipeline Monitoring



Based on these insights, a structured AI-based asset integrity management system is proposed for oil and gas infrastructure, including pipelines, accounting for practical implementation ...



These insights provide a comprehensive framework for monitoring pipeline integrity, allowing operators to make data-driven decisions and initiate immediate responses to maintain safe ...



Pipeline operators are welcome to observe simulations of the monitoring system for their projects. The facility is also used to test and refine new technology to solve critical pipeline operation and integrity ...



Learn how AI and IoT enable real-time pipeline monitoring to detect leaks early, improve safety, and enhance pipeline integrity across operations.



Integrating Geo-AI solutions in oil and gas pipeline monitoring can greatly reduce the need for human intervention, saving costs. It can also minimize the financial impact of pipeline ...



A structured approach to deploying IoT monitoring systems across remote onshore oil and gas fields.



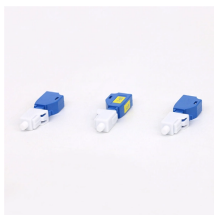
Hongdian Intelligent Oil and Gas Pipeline Management Solution integrates sensors, the Smart 3000 Edge AI BOX, and the Wedora cloud platform to enable real-time monitoring and remote ...



First, the paper highlights the key considerations that influence the monitoring system's design, including pipeline materials, surrounding terrain, regulatory compliance, and operational costs.



Although some other studies have incorporated ML techniques to predict and control petroleum product terminals in terms of concentration, the proposed framework incorporates Add On ...



Although some other studies have incorporated ML techniques to predict and control petroleum product terminals in terms of concentration, the ...



The proposed IoT-based system aims to enhance the efficiency and reliability of pipeline management by leveraging sensors, data analytics platforms, and machine learning algorithms for predictive ...

Contact Us

For more information, pricing, or custom network solutions, please contact us:

Website: <https://www.hashherbcafe.co.za>

Email: hello@hashherbcafe.co.za

Phone: +27 63 814 7295

Address: 15 Galaxy Road, Linbro Business Park, Johannesburg, 2065, South Africa

This document is for informational purposes only. Specifications subject to change without notice.

