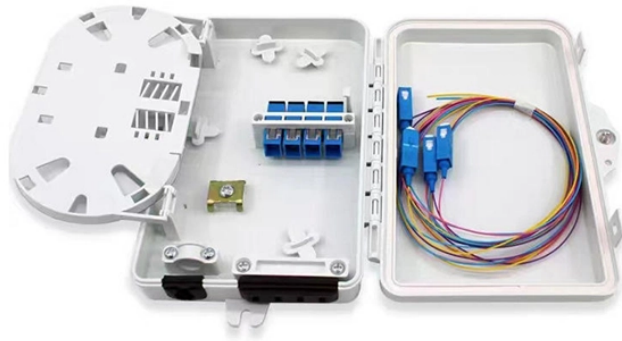


Commissioning and Maintenance of Relay Protection



Commissioning and Maintenance of Relay Protection



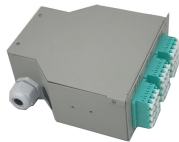
Performing tests on individual relays is a common practice for relay engineers and technicians. Most utilities have a wide variety of test plans and practices. However, properly commissioning an entire ...



Commissioning tests are done to show that a particular protection configuration has been correctly used prior to setting to work.



The performance of protective relay is affected by maintenance. Basic requirements of sensitivity, selectivity, reliability and stability can be satisfied only if the maintenance is excellent.



By storing the protection settings and configuration files online through our cloud service, they can be easily restored in the event of malfunction, repair or replacement of the relay.



For over 50 years, Electrical Reliability Services (ERS) has been providing startup, commissioning, testing, maintenance, and engineering services for advanced relay systems.



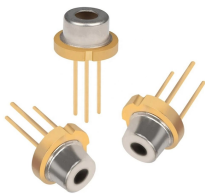
To ascertain current maintenance and testing practices for protective relays, data was gathered from industry databases, power generating stations, and relay manufacturers.



Protection relay testing and commissioning are critical steps in ensuring the reliability and safety of power systems. Properly tested relays protect equipment, maintain stability, and enhance the safety ...



Protective relay testing is most effective when viewed as a lifecycle activity. Commissioning tests establish a baseline, but they are only the starting ...



This document discusses commissioning and maintenance of protective relays. It recommends secondary injection testing with relays isolated as the preferred test method. This allows proof of ...



Facilities need to perform installation tests, implement preventive maintenance programs, and perform comprehensive commissioning tests to verify the integrity of both existing protective relay systems ...

Contact Us

For more information, pricing, or custom network solutions, please contact us:

Website: <https://www.hashherbcafe.co.za>

Email: hello@hashherbcafe.co.za

Phone: +27 63 814 7295

Address: 15 Galaxy Road, Linbro Business Park, Johannesburg, 2065, South Africa

This document is for informational purposes only. Specifications subject to change without notice.

