

Columbia QSFP-DD Optical Module NRZ



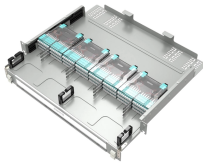
Columbia QSFP-DD Optical Module NRZ



Based on eight lanes, QSFP-DD modules can support 200G (8x25G NRZ), 400G (8x50G PAM4), and are an important form factor for emerging 800G (8x100G PAM4) applications.



The QSFP-DD is the smallest 400G form factor optical module on the market today. It is also the optical module that offers the highest transmission bandwidth density in 400G applications, ...



They expand Cisco routed optical networking applications to include 800G links and are compatible with Cisco and third-party 800G-capable routers, switches, and transponders with QSFP ...



QSFP-DD Interconnect System's 8-lane electrical interface transmits 28G NRZ, 56G PAM-4 and 112G PAM-4, up to 200, 400 or 800 Gbps aggregate. Backwards compatible with QSFP.



Powered by Greylock and Delphi DSP ASICs, and silicon photonic integrated circuits (PICs) for an optimized co-packaged design with 3D Siliconization. Supports an expansive list of interoperability ...



QSFP-DD Interconnect System's 8-lane electrical interface transmits up to 28 Gbps NRZ or 56 Gbps PAM-4, up to 200 or 400 Gbps aggregate, with the same footprint as QSFP Interconnects, making ...



The electrical interface of this package has 8 channels, each channel rate up to 25Gb/s (NRZ modulation) or 50Gb/s (PAM4 modulation), aggregation to provide up to 200Gb/s or 400Gb/s ...



Amphenol QSFP DD to QSFP DD 200G Active Optical Cable assemblies increase the number of lanes from 4 to 8 and double the port density as compared to 100G QSFP28 AOC. The ...



QSFP-DD electrical interfaces will employ eight lanes that operate up to 25 Gbps NRZ modulation or 50 Gbps PAM4 modulation, providing solutions up to 200 Gbps or 400 Gbps aggregate.



200G QSFP-DD Active Optical Cables 8x25G NRZ, 100Meters (328ft) [Read more Optical Lab Equipment](#)

Contact Us

For more information, pricing, or custom network solutions, please contact us:

Website: <https://www.hashherbcafe.co.za>

Email: hello@hashherbcafe.co.za

Phone: +27 63 814 7295

Address: 15 Galaxy Road, Linbro Business Park, Johannesburg, 2065, South Africa

This document is for informational purposes only. Specifications subject to change without notice.

