

Columbia Pigtail Channel Processing Plant



Overview

The facility has the capacity to process 40,000 tons of pulse crops per year, including dry edible beans, peas and lentils, providing a local market for North Dakota farmers while supporting the state's mission of building more value-added agriculture facilities across the state. CGI is one of the largest processors and exporters of pulses in the United States. With the addition of our new, innovative, high-tech processing plant in Plentywood, MT, we have increased our. VALLEY CITY, N. Here at Columbia Grain International (CGI), we are dedicated to cultivating the growth of the food supply chain in the northwestern region of the United States to ensure the world receives. Global Food's new Columbia Basin facility has now officially opened, marking the completion of a significant investment in this state of the art potato processing site and a proud milestone for everyone who helped bring this vision to life. PORTLAND, OREGON, US — After 32 years in various management positions with Columbia Grain International (GCI), Kurt Haarmann recently ascended to the captain's seat of the Portland, Oregon, US-based company.

Columbia Pigtail Channel Processing Plant



As one of the largest producers and exporters of pulses in the United States, CGI has invested in eight processing facilities in which pulse crops are cleaned, bagged and distributed ...



Global Food's new Columbia Basin facility has now officially opened, marking the completion of a significant investment in this state of the art potato processing site and a proud milestone for ...



Columbia Grain will grow, procure, clean and process the products for domestic food and pet food markets as well as for export. Columbia Grain expects to process over 50,000 tonnes of ...



The plant features high-speed robotic lines for high capacity, offering packing, milling and blending capabilities for stone or hammer mills. It offers a range of package sizes and types for retail, ...



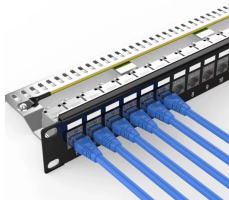
CGI just topped off a record-breaking year of pulse sales by acquisition of a new processing plant in Hastings, Neb. This extremely favorable business combination will greatly benefit ...



Columbia Grain International hosted the grand opening of its new flagship pulse processing plant at Valley City, North Dakota. Plant Manager Cody Micheals outlined the reason ...



VALLEY CITY, N.D. (NewsDakota) - The Grand Opening of the Columbia Grain Pulse Processing Plant west of Valley City was held Wednesday, April 1st.



We operate grain elevators, processing plants and agronomy centers. Today, Columbia Grain has 45 grain and pulse facilities, including two export terminals in the Pacific Northwest ...



With the addition of our new, innovative, high-tech processing plant in Plentywood, MT, we have increased our ability to receive and process grower pulse crops by 60 percent; processing upwards ...

Contact Us

For more information, pricing, or custom network solutions, please contact us:

Website: <https://www.hashherbcafe.co.za>

Email: hello@hashherbcafe.co.za

Phone: +27 63 814 7295

Address: 15 Galaxy Road, Linbro Business Park, Johannesburg, 2065, South Africa

This document is for informational purposes only. Specifications subject to change without notice.

