

Columbia Fiberglass Cable Tray Cover Plates



Columbia Fiberglass Cable Tray Cover Plates



Used to fully enclose 12x4 channel in conjunction with the Spill-Over Junction FRSPJ2X2BL. Cover snaps onto the channel base. Hinged feature allows easy access to add or remove cables.



Tested for ABS, NEMA and IEC, B-Line series fiberglass cable tray is ideal for harsh, marine and caustic environments. Learn about its corrosion resistant properties.



Custom manufacturer of cabletrays made from aluminum, fiberglass reinforced plastic (FRP), galvanized and stainless steel materials. Suitable for supporting insulated electrical cables.



MP Husky offers a wide variety of cable tray covers to provide protection for the cables contained within the system from sunlight, environmental elements, dirt, debris, and falling objects. All of the covers ...



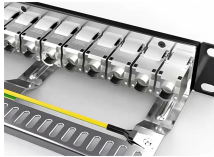
Atkore's US Tray was established in 2012, as an American manufacturer of made-to-order cable trays that are built per NEMA standards and certified by UL. We offer modern, innovative, and technically ...



BKRS Walkable Cable Tray Tough enough to be walked on...and provide the best protection to industrial power and data cables. With non-slip treaded covers to optimize slip resistance, the BKRS Walkable ...



Cut, bend, and connect the wire mesh trays to route cable and hose in configurations such as curves, slopes, and tees. They are a lightweight option for organizing bundles of cable and hose while ...



Cable tray length is selected based on the load to be supported, the distance between the supports (also referred to as the span), and handling and installation constraints.



That is, it covers the top section of the cable tray. In this guide, you will learn about the different types of cable covers and how to choose a perfect option.



Lightweight yet robust and resistant to corrosion, fiberglass ladder tray often outperforms galvanized or stainless steel over the life cycle.



A complete guide to cable tray cover types: Compare 9+ designs, material specifications (NEMA/IEC), selection factors & maintenance best practices.

Contact Us

For more information, pricing, or custom network solutions, please contact us:

Website: <https://www.hashherbcafe.co.za>

Email: hello@hashherbcafe.co.za

Phone: +27 63 814 7295

Address: 15 Galaxy Road, Linbro Business Park, Johannesburg, 2065, South Africa

This document is for informational purposes only. Specifications subject to change without notice.

