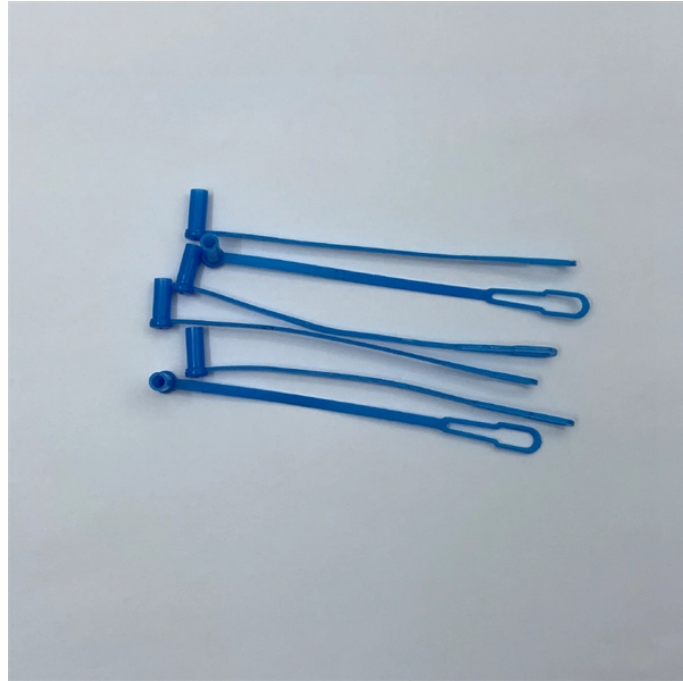


## Columbia Direct Sales ONU Optical Network Unit 25G



## Columbia Direct Sales ONU Optical Network Unit 25G



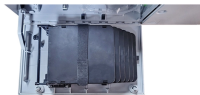
From optical cables ensuring stable data transmission, routers that manage network traffic efficiently, to fiber distribution boxes for convenient fiber - optic splitting and connection, we offer solutions to build ...



The PMD requirements for the 25G signals of 25GS-PON are contained in clause 141 of IEEE Std 802.3caTM 2020, Draft Standard for Ethernet, Amendment: Physical Layer Specifications and ...



Optical network terminals provide a seamless bridge between fiber optic and Ethernet networks. Discover plug-and-play convenience and auto-negotiation features.



ONU, or Optical Network Unit, is a networking device that connects your home or business to the internet using fiber optic cables. It's like a bridge between the vast internet world and your personal ...



Buy original Optical Network Unit (ONU) at best price in Bangladesh. Get brand warranty, free delivery, COD and EMI offers on eligible orders.



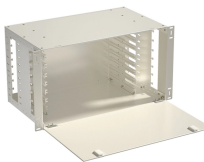
Discover our selection of GPON, EPON, and XG (S)PON ONT/ONU devices. Choose from reliable Optical Network Terminals for seamless connectivity and efficient network solutions.



It is a low power consumption, high performance and excellent cost performance CATV & DBS network ONU (Optical network unit). This series product adopts high sensitivity receiving tube and special low ...



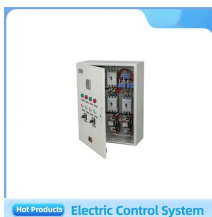
Discover our selection of GPON, EPON, and XG (S)PON ONT/ONU devices. Choose from reliable Optical Network Terminals for seamless connectivity and ...



Sumavision provides first-class GPON Optical Network Unit (ONU) to help individual users connect to ultra-fast internet that delivered by fiber access network. It leverages GPON technology to provide ...



FS 25G SFP28 optical transceiver solutions offer a wide variety of high-density and low-power connectivity options for 25 Gigabit Ethernet, telecom, and data center.



The ONU, functioning as the Powered Device (PD), receives both power and data through the Ethernet cable. This approach eliminates the need for a separate power source for each ONU, making ...

## Contact Us

For more information, pricing, or custom network solutions, please contact us:

Website: <https://www.hashherbcafe.co.za>

Email: [hello@hashherbcafe.co.za](mailto:hello@hashherbcafe.co.za)

Phone: +27 63 814 7295

Address: 15 Galaxy Road, Linbro Business Park, Johannesburg, 2065, South Africa

This document is for informational purposes only. Specifications subject to change without notice.

