

## Chilean Outdoor Wiring Box Anti-Catalytic Marking



## Chilean Outdoor Wiring Box Anti-Catalytic Marking



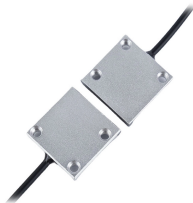
Chile power cords and power AC cables, produced by International Configurations meet Chile quality standards and comply with current RoHS and REACH requirements.



They are popularly used for wire identification in high-temperature situations or where additional insulation is needed, thus offering the dual function of marking and protection.



Designed for the most rigorous indoor or outdoor use, our portfolio of wire labeling and identification features flexible options including adhesive-backed wiring and cable labels, heat-shrinkable sleeves, ...



All electrical products with mandatory certification require an approval or follow-up certificate issued by a local (Chilean) Certification Body authorized by the Regulatory Authority ( Superintendencia of ...



The product line consists of stainless steel marking plates, holders and cable ties that are available optionally either individually or in a complete set in a service box.



The NEMA standards is the only one with a special usage plug standard for hospital environments, so there is no hospital grade standard in Argentina, Brazil, Chile or Peru.



Prevents the flow of water along length of cable in unlikely event of compromised cable jacket. Achieved through various methods including gels, tapes, and powders.



This is in response to your letter dated October 14, 2010, requesting a ruling on the country of origin marking requirements for aluminum electrical boxes from the United States (U.S.) which are exported ...



The National Electrical Code (NEC) provides essential rules for setting up outdoor circuits and equipment safely. Outdoor wiring requires careful attention to prevent moisture and corrosion, ...

## Contact Us

For more information, pricing, or custom network solutions, please contact us:

Website: <https://www.hashherbcafe.co.za>

Email: [hello@hashherbcafe.co.za](mailto:hello@hashherbcafe.co.za)

Phone: +27 63 814 7295

Address: 15 Galaxy Road, Linbro Business Park, Johannesburg, 2065, South Africa

This document is for informational purposes only. Specifications subject to change without notice.

