

## Charging Pile Cable Tray Construction Process



### Overview

Step-by-step cable tray and conduit installation method with safety, quality and inspection procedures as per IEEE standards. The Cable Tray system is installed in electrical rooms, plant rooms, and service. Below is the detailed cable tray installation method statement not only for cable tray but also applicable for GI ladder and trunking for indoor and outdoor applications and in service rooms like pump rooms, electrical rooms and plant rooms etc. Below, I will introduce to you what you should pay attention to when installing.

1. 0 IGO-ported license (CC BY-NC-ND 3. You are free to share this work (copy, distribute and transmit) under the following conditions: you must give credit to the ITER Organization, you cannot use the work.

## Charging Pile Cable Tray Construction Process



The Cable Tray system is installed in electrical rooms, plant rooms, and service corridors. This section will guide you through the necessary steps to ensure a successful installation.



Lay the power cord according to the wire diameter requirements, align the pile body with the holes, place it on the cement base, and tighten it with M12X70 bolts.



Cable tray sections must be in accordance with the cable types and/or the number of cables installed in it, respecting the maximum filling ratio, according to the cable tray type.



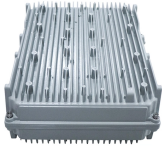
The Cable Tray Institute (CTI) was founded in 1991 to support the cable tray industry by engaging in research, development, education, and the dissemination of information designed to promote, ...



1.0 This method statement will serve as a minimum guideline to carry out the Cable Tray Installation activities for commercial buildings, plants and refineries in accordance with Project Drawings and ...



Below is the detailed cable tray installation method statement not only for cable tray but also applicable for GI ladder and trunking for indoor and outdoor applications and in service rooms like pump rooms, ...



The document provides guidelines for installing cable trays and accessories. It outlines 15 steps for the installation process including preparing cable tray supports, surveying the route, cutting trays to ...



The installation project of charging pile is a complex process, which requires qualified electrician construction, reasonable selection and wiring, correct installation and testing and other steps.



Cable tray length is selected based on the load to be supported, the distance between the supports (also referred to as the span), and handling and installation constraints.



Step-by-step cable tray and conduit installation method with safety, quality and inspection procedures as per IEEE standards.

## Contact Us

For more information, pricing, or custom network solutions, please contact us:

Website: <https://www.hashherbcafe.co.za>

Email: [hello@hashherbcafe.co.za](mailto:hello@hashherbcafe.co.za)

Phone: +27 63 814 7295

Address: 15 Galaxy Road, Linbro Business Park, Johannesburg, 2065, South Africa

This document is for informational purposes only. Specifications subject to change without notice.

