

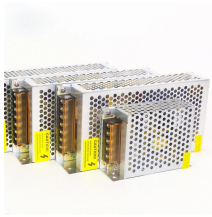
Case Study of Hot Aisle Construction in Canadian Data Centers



Case Study of Hot Aisle Construction in Canadian Data Centers



This study underscores the necessity of high-fidelity CFD modeling for accurate airflow diagnosis and offers practical design guidelines for developing reliable and thermally efficient edge ...



By combining in-house engineering with proactive project management and coordinated supply chain execution, Maysteel streamlined the entire process - meeting tight deadlines while maintaining the ...



The goal of this case study is to provide a clear framework for deciding between the two primary approaches—Hot Aisle Containment (HAC) and Cold Aisle Containment (CAC)—by exploring how a ...



Read this whitepaper which contains a study on the effect of different panel and framing materials on a cold aisle temperature rise.



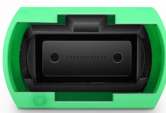
The document discusses hot aisle and cold aisle containment strategies for data centers, highlighting their importance in improving airflow management and energy efficiency.



By preventing the mixing of hot exhaust air with cold intake air, these hot aisle containment data center systems keep data centers running smoothly and cost-effectively. This ...



This study analyzes the IT environment of the hot aisle containment (HAC) system, which has been considered an essential solution for high-density data centers.



This project demonstrates how modular extruded containment systems allow data center contractors to deploy advanced cooling solutions rapidly while minimizing on-site disruption.



Hot aisle containment (HAC) takes advantage of the natural properties of warm air rising. The HAC system directs the upward airflow to an AC return system such as a drop-ceiling void. The HAC can ...



Through a combination of theoretical insights and practical examples, this study provides engineers, designers, and stakeholders a comprehensive reference for containment selection and...

Contact Us

For more information, pricing, or custom network solutions, please contact us:

Website: <https://www.hashherbcafe.co.za>

Email: hello@hashherbcafe.co.za

Phone: +27 63 814 7295

Address: 15 Galaxy Road, Linbro Business Park, Johannesburg, 2065, South Africa

This document is for informational purposes only. Specifications subject to change without notice.

