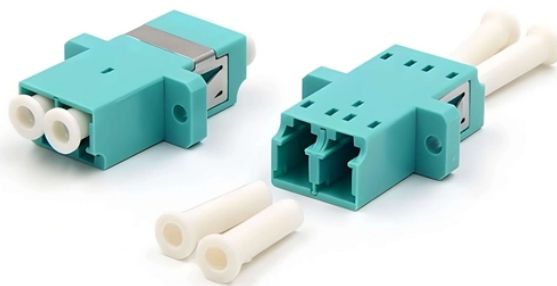


Carrier optical module interface



Overview

The OIM is a passive device that provides fiber X-connect functions. Note This system description includes high-level details of the OIM and OIM-LED cards. Sign in for real-time inventory at branches near you. What's the price?

The Network Interface Module (NIM) is used to interface the following devices to the Infinity ABCD bus so they can be controlled by the Infinity System. The following devices do not have communication ability and the NIM is. This chapter describes the optical interface module (OIM) cards and optical interface module light emitting diode (OIM-LED) cards. It includes the following sections: OIM cards (CRS-FCC-OIM-1S) host a set of connectors located at the rear of the fabric card chassis (FCC).

Carrier optical module interface



Find many great new & used options and get the best deals for Carrier Bryant SYSTXCCNIM01 Network Interface Module Infinity System Control at the best ...



See Cisco CRS-1 Carrier Routing System Multishelf System Interconnection and Cabling Guide for complete information on the OIM cards, fabric cables, and OIM-LED cards.



This versatile module offers several key benefits and technical features: - Connectivity: The interface module provides a reliable connection between Carrier systems, ensuring effective communication ...



Find many great new & used options and get the best deals for Carrier Bryant SYSTXCCNIM01 Network Interface Module Infinity System Control at the best online prices at eBay!



The Network Interface Module (NIM) is used to interface the following devices to the Infinity ABCD bus so they can be controlled by the Infinity System. The following devices do not have communication ...



Working primarily in commercial applications and homes with Carrier air conditioning and heating system, the SYSTXCCNIM01 allows for the connection to building automation systems and smart ...



The Network Interface Module (NIM) is used to interface the following devices to the Infinity ABCD bus so they can be controlled by the Infinity System. The following devices do not have communication ...



Refer to the dual fuel application wiring diagram in the installation manual to connect the non-communicating single-speed heat pump with Infinity furnace to the Network Interface Module.



Explore the ultimate guide to optical modules. Learn types, functions, performance metrics & how to choose the right module for your fiber network.



Explore the ultimate guide to optical modules. Learn types, functions, performance metrics & how to choose the right module for your fiber network.



Interface between the Infinity system and a home automation system is accomplished through the RS--232 communication port of the System Access Module (part number SYSTXCCRCT01), in ...



In BiDi optical modules, SC (Subscriber Connector) and LC (Lucent Connector) are common fiber interface types. While they share the same functionality, they differ significantly in their ...

Contact Us

For more information, pricing, or custom network solutions, please contact us:

Website: <https://www.hashherbcafe.co.za>

Email: hello@hashherbcafe.co.za

Phone: +27 63 814 7295

Address: 15 Galaxy Road, Linbro Business Park, Johannesburg, 2065, South Africa

This document is for informational purposes only. Specifications subject to change without notice.

