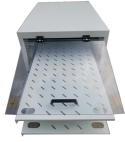


## Cap-type column-type fiber optic cable junction box



## Cap-type column-type fiber optic cable junction box



A cap-type metal joint box is used for splicing ADSS and OPGW fiber optic cables in telecommunications, data centers, and utility infrastructure. It provides a protected environment for ...



The FIMP XL from Eks Fiber Optic System is designed for splicing and contains a splice tray, couplings, pigtails, and a cable gland. The front panel and the splice cassette are removable for splicing.



The fiber splice box is suitable for the straight-through and branch connection of the overhead, pipeline, direct burial and other laying methods of various layout fiber optical cables.



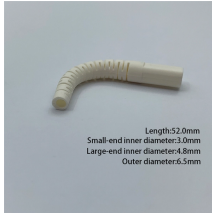
CommScope offers a complete line of easy-to-use access terminals, copper and fiber splice closures, patch closures and accessories to speed deployment.



Cable Joint Box is sold as an assembly. A Cable Storage Shelf and Fix Clamp are needed when installed on the tower,. A Cable Storage Shelf and three Stainless Steel Bands are needed when ...



High-quality underground fiber optic cable box, IP68 waterproof, 12-96 core capacity, available at an average price around \$60, ideal for wholesale telecom applications.



Easy to install and fix on pole (tower) or tubes. (1) optic fiber joint box is designed for splicing ADSS, OPGW cables and the normal cables, including two to four sleeves for input and output. (2) Ensure ...



Fiber Optic Wall Mount Box with LC Couplers for Single Mode & Multimode Fiber Optic Cable. | Fiber Box Enclosure for MPOE's, Network Rooms, and IDF Rooms. (LC 6 Strand OS1/OS2)



Grandway provides customized fiber optic joint enclosure boxes and solutions. Grandway FTTH closures are suitable for all cable application environments, such as cable ducts, overhead cables, ...



This 12 port fiber access terminal box is designed to connect feeder cables to subscriber drop cables for FTTH last-mile fiber connectivity. It integrates fiber splicing, optical signal splitting, termination and ...

## Contact Us

For more information, pricing, or custom network solutions, please contact us:

Website: <https://www.hashherbcafe.co.za>

Email: [hello@hashherbcafe.co.za](mailto:hello@hashherbcafe.co.za)

Phone: +27 63 814 7295

Address: 15 Galaxy Road, Linbro Business Park, Johannesburg, 2065, South Africa

This document is for informational purposes only. Specifications subject to change without notice.

