

## Can single-mode fiber be used with multiple modules



## Can single-mode fiber be used with multiple modules



Single-Mode vs Multi-Mode SFP Fiber Modules Explained In the world of fiber optic networks, the choice between single-mode and multi-mode SFP (Small Form-factor Pluggable) ...



In the former case, you need to use single-mode fiber because the multimode fiber cannot reach that far. The problem is how to realize SMF connects to the end equipment multimode modules.



Learn how single-mode and multi-mode transceivers differ, compatibility rules, testing tips, and best practices for reliable fiber deployments.



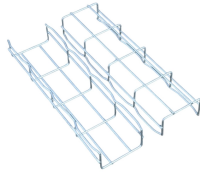
In conclusion, while it may be technically possible to use a single-mode SFP with a multimode cable, it is not advisable due to the inherent incompatibilities between the two components.



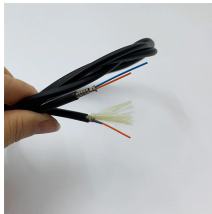
Discover the differences between single-mode and multimode SFP transceivers. Learn which one suits your network needs for optimal performance and connectivity.



Q1: Why can't single-mode SFP modules operate on multimode fiber, even if the connectors fit (LC-to-LC)? A: Because single-mode transmitters (DFB/EML lasers using 1310/1550 ...



Among the most commonly used fiber types are single-mode fiber (SMF) and multimode fiber (MMF), often paired with 1310nm SFP modules for high-speed data transmission.



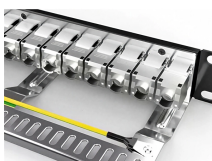
In summary, while it may be technically possible to use a single-mode SFP with multimode fiber, it is not recommended due to the significant potential for signal loss, increased error rates, and reduced ...



Most single-fiber modules are single-mode due to the complexity and cost of wavelength multiplexing in multi-mode applications. However, while they are conceptually independent, in ...



Single mode SFP modules operate on single mode fiber, which uses a smaller diameter core to transmit light over longer distances. A multimode SFP module has a larger diameter, and ...



Most single-fiber modules are single-mode due to the complexity and cost of wavelength multiplexing in multi-mode applications. However, while they ...

## Contact Us

For more information, pricing, or custom network solutions, please contact us:

Website: <https://www.hashherbcafe.co.za>

Email: [hello@hashherbcafe.co.za](mailto:hello@hashherbcafe.co.za)

Phone: +27 63 814 7295

Address: 15 Galaxy Road, Linbro Business Park, Johannesburg, 2065, South Africa

This document is for informational purposes only. Specifications subject to change without notice.

