

Can a splitter be installed inside a terminal box

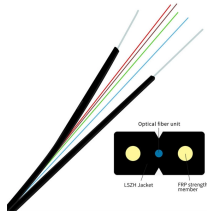


Overview

It's well-known as a distribution box when splitters install inside the terminal box. Terminal boxes are suitable for a dispersed network structure after deploying the. In this guide, you'll learn how fiber splitters function in PON networks, the difference between PLC and FBT types, and how to choose the best model for your rollout in 2025. What Are Fiber Optic Splitters in PON?

Fiber splitters are passive devices that divide one optical input signal into. This video provides a step-by-step guide on how to efficiently install optical splitter into a fiber terminal box, demonstrating a professional and reliable deployment for optical distribution network solution (<https://www.> Engineered with a high-quality impact-resistant plastic, this box is. Whether housed in box-type, module-type, bare fiber, rack-mount, or tube-type configurations, each serves a specific purpose, from wall mounting to integration into patch panels or equipment racks.

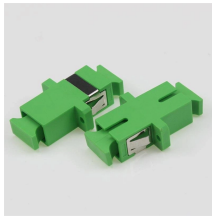
Can a splitter be installed inside a terminal box



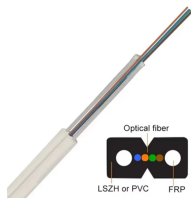
By incorporating a PLC splitter directly inside the terminal, service providers can significantly simplify field installation, reduce the number of splicing points, and accelerate subscriber ...



Free sample! The distribution box can hold 6 cores termination and install 1×4 fiber optic splitter to distribute optical cable and split optical signal.



One component makes PON deployment scalable and efficient: the fiber optic splitter. It allows a single input from the OLT to serve multiple endpoints without active electronics.



This video provides a step-by-step guide on how to efficiently install optical splitter into a fiber terminal box, demonstrating a professional and reliable deployment for optical...



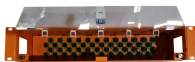
Designed for outdoor enclosures, pedestals, and equipment racks, the Fiber Distribution Terminal Assembly supports up to 16 MST fibers. Waterproof and designed for performance and ...



It's well-known as a distribution box when splitters install inside the terminal box. There are two types of distribution boxes: box-type and splice tray-type, depending on the type of splitter ...



This 16-core FTTH access terminal box supports LGX splitters, SC adapter panels, and fiber splicing, delivering efficient NAP distribution for FTTx networks.



Free sample! The distribution box can hold 6 cores termination and install 1×4 fiber optic splitter to distribute optical cable and split optical signal.



Understanding how to properly place and use an optical splitter is essential for optimizing signal quality and ensuring seamless data transmission. Let's explore the best practices for ...



SFTB48 is designed to house fiber optical splitters without the need of accessories. It's suitable for indoor/ outdoor applications, and made of ABS material, which makes it light, easy to install and ...

Contact Us

For more information, pricing, or custom network solutions, please contact us:

Website: <https://www.hashherbcafe.co.za>

Email: hello@hashherbcafe.co.za

Phone: +27 63 814 7295

Address: 15 Galaxy Road, Linbro Business Park, Johannesburg, 2065, South Africa

This document is for informational purposes only. Specifications subject to change without notice.

