

Can a patch cord be used to connect the fiber optic box



Overview

Buyer question: Can patch cords replace pigtailed inside the ODF to “save a step”?

Answer: No. Patch cords aren't for permanent splicing; they're for reconfigurable front-side patching. Pigtailed create the back-end interfaces. A fiber optic patch cord (fiber jumper) is: Typical applications: A patch cord is the “bridge” that connects two fiber devices and lets them talk to each other. ZION Communication supplies both standard patch cords and custom assemblies to match your equipment, distance, and installation. When you build or upgrade a fiber network, the same four words pop up everywhere—fiber optic (bare fiber), pigtail, patch cord, optical cable. Mixing them up drives costs higher, increases loss, and slows your rollout. You plug it into a switch, router, or patch panel. Other types of fiber cable have different traits. A Fiber patch cord, also named as a fiber patch cable or fiber jumper, is a fiber optic cable that is terminated with different types of fiber connectors.

Can a patch cord be used to connect the fiber optic box



Learn how to pick the right fiber optic patch cord or pigtail. Avoid installation errors. Based on 12+ years of field experience. Step-by-step guide with real examples.



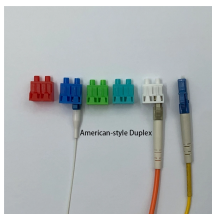
Install fibre patch cords for reliable home networking with step-by-step tips on choosing, connecting, and maintaining your fibre patch cord.



Learn about fiber optic patch cables, their types, construction, applications, and how to choose the right one for your network needs.



Fiber optic cable has gone through quite the evolution of connectors, and none of these connector styles are compatible with each other. Some connector types are actually being phased out.



"Can" is one of the most commonly used modal verbs in English. It can be used to express ability or opportunity, to request or offer permission, and to show possibility or impossibility.



Used to indicate possession of a specified power, right, or privilege. The president can veto congressional bills.



The use of can to ask or grant permission has been common since the 19th century and is well established, although some feel may is more appropriate in formal contexts. May is relatively rare in ...



Despite the insistence by some, that can means only “to be able” and may means “to be permitted,” both are regularly used in seeking or granting permission: Can (or May) I borrow your umbrella?



Explore fiber optic patch cords for telecom, data centers, and FTTH. From LC/SC to MPO/MTP and armored jumpers, ZION Communication offers ...



The quick answer is that fiber patch cables are designed for relatively short-distance connections, usually less than 50 feet, within a network or between devices. They also come with ...



Can is usually used in standard spoken English when asking for permission. It is acceptable in most forms of written English, although in very formal writing, such as official instructions, may is often ...



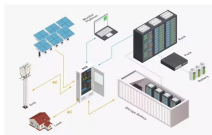
CAN definition: to be able to; have the ability, power, or skill to. See examples of can used in a sentence.



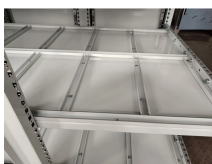
Explore fiber optic patch cords for telecom, data centers, and FTTH. From LC/SC to MPO/MTP and armored jumpers, ZION Communication offers high-quality, customizable fiber patch ...



A Fiber patch cord, also named as a fiber patch cable or fiber jumper, is a fiber optic cable that is terminated with different types of fiber connectors. These fiber connectors allow the fiber ...



If you need to purchase fiber optic cable patch cord, Fibconet, as a manufacturer with nearly 20 years of production experience, can meet your customization needs and provide insertion ...



When you build or upgrade a fiber network, the same four words pop up everywhere— fiber optic (bare fiber), pigtail, patch cord, optical cable. They're related, but they are not ...



Our custom fiber optic patch cables are perfect for patching out from your fiber optic enclosures to your SPF transceivers, network switches, or media converters.

Contact Us

For more information, pricing, or custom network solutions, please contact us:

Website: <https://www.hashherbcafe.co.za>

Email: hello@hashherbcafe.co.za

Phone: +27 63 814 7295

Address: 15 Galaxy Road, Linbro Business Park, Johannesburg, 2065, South Africa

This document is for informational purposes only. Specifications subject to change without notice.

