

Can IPs from different network segments be connected to a switch




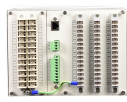
Overview


In addition to configuring an IP address for a VLANIF interface, you need to configure a static route or a dynamic routing protocol when PCs on different network segments across several switches need to communicate. As one of the core equipments in the network, if the switch can realize the interconnection between different network segments, it will certainly provide more convenient and efficient support for network. Is it possible to communicate between two different network segments within a single vlan?


Both devices on VLAN1, untagged. 33/24 via layer two communication. This is because only a direct route is generated for the VLANIF interface's IP. Let's have a look at the different ways we can solve this problem: Our first option is to use one of the Servers, or a new Server which has at least 2 network cards installed. With the growing demand for reliable and organized network infrastructure, VLANs have become essential for optimizing and securing.


Can IPs from different network segments be connected to a switch

	<p>Layer 2 switches work at the data link layer and forward data frames based on MAC addresses, and they must use routers to realize the interconnection between different network ...</p>
---	--

	<p>Two host of different subnets, let it be A - 10.1.2.1/24 and B - 10.1.3.1/24 be connect to the same switch S. Can they communicate? So as far I understand: A sends a packets with IP of B S ...</p>
---	---

	<p>This guide explores three methods (Layer 3 devices/dual-NIC hosts/firewalls) to connect 192.168.1.0/24 and 192.168.2.0/24 segments, with Huawei switch and Linux examples, addressing ...</p>
--	--

	<p>To make things even more complex, they could have a third set of IP addresses, say 10.255.255.0/24, that is shared among them. Within that subnet, L2 is possible.</p>
---	---

	<p>"Can" is one of the most commonly used modal verbs in English. It can be used to express ability or opportunity, to request or offer permission, and to show possibility or impossibility.</p>
---	---



Layer 2 switches work at the data link layer and forward data frames based on MAC addresses, and they must use routers to realize the ...



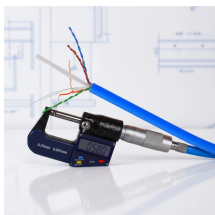
I have setup a L2 switch and 3 PCs (A,B,C) connected to the switch in default VLAN to see if different hosts in different subnets can communicate with each other; and if not why.



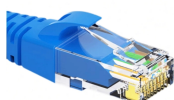
Can is usually used in standard spoken English when asking for permission. It is acceptable in most forms of written English, although in very formal writing, such as official instructions, may is often ...



A common confusion arises when devices are on different VLANs but share the same IP subnet: they can't communicate with each other. Learn why that is so and how to solve it.



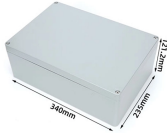
We provide examples on different methods that can be used to enable subnet communications in an effective and secure manner. Generally, this article puts in practice all subnetting theory covered until ...



When different departments or devices with different functions are in different network segments, the switch can connect these segments to realize the communication between ...



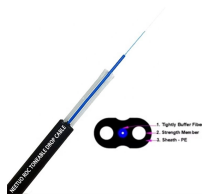
Used to indicate possession of a specified power, right, or privilege. The president can veto congressional bills.



In addition to configuring an IP address for a VLANIF interface, you need to configure a static route or a dynamic routing protocol when PCs on different network segments across several switches need to ...



The use of can to ask or grant permission has been common since the 19th century and is well established, although some feel may is more appropriate in formal contexts. May is relatively rare in ...



Despite the insistence by some, that can means only "to be able" and may means "to be permitted," both are regularly used in seeking or granting permission: Can (or May) I borrow your umbrella?



CAN definition: to be able to; have the ability, power, or skill to. See examples of can used in a sentence.



The situation is: I have a gateway with a fixed ip address (192.168.0.51) which I would like to configure as a normal switch inside my "1" subnet. But it now has an ip in subnet "0" outside of my ...

Contact Us

For more information, pricing, or custom network solutions, please contact us:

Website: <https://www.hashherbcafe.co.za>

Email: hello@hashherbcafe.co.za

Phone: +27 63 814 7295

Address: 15 Galaxy Road, Linbro Business Park, Johannesburg, 2065, South Africa

This document is for informational purposes only. Specifications subject to change without notice.

