

Can Huawei switches use other optical modules



Overview

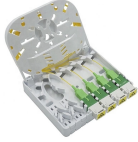
Description: Huawei switches must use Huawei-certified optical modules. How Can I Determine Whether an Optical Module Is Identified by the Switch or Check the Transmit Power of an Optical Module?

Can an XFP Optical Module Interconnect with an SFP+ Optical Module?

What Is a Single-Fiber Bidirectional Optical Module?

Can a Multi-mode Optical Module Use a Single-Mode. Optical modules are widely used in switches, network interface cards (NICs), routers, and other communication devices. During use, reading optical module information helps understand its real-time operating status, enabling faster troubleshooting of link abnormalities. This article summarizes several solutions for using optical modules with switches and common. Optical fibers can be classified based on their optical transmission modes into multimode fibers (MMFs) and single-mode fibers (SMFs). This section describes the differences between MMFs and SMFs.

Can Huawei switches use other optical modules



Optical modules are strictly tested and verified to ensure the compatibility and performance of optical modules. Next, we will introduce Huawei S6720S-26Q-LI-24S-A switch and optical module matching ...



Optical modules are widely used in switches, network interface cards (NICs), routers, and other communication devices. During use, reading optical module information helps understand its real ...



Optical modules are strictly tested and verified to ensure the compatibility and performance of optical modules. Next, we will introduce Huawei S6720S-26Q-LI ...



A switch must use optical or copper modules that have been certified for use on Huawei S switches. Non-certified optical or copper modules cannot ensure transmission reliability and may affect service ...



Introduce a fact: The Huawei S2700/3700/5700/6700/7700 support the Optical Modules of other vendors, learn more about Huawei S2700/3700/5700/6700/7700 Series Switches.



Optical modules with the same standards can interoperate with each other. The standards define the rate, wavelength, and transmission distance of optical modules, but not their ...



This article summarizes several solutions for using optical modules with switches and common problems encountered during usage, along with specific solutions.



Therefore, when optical fibers are required for network deployment in TOR scenarios, CE6851-48S6Q-HI, CE6855-48S6Q-HI, or other Huawei CE series switches that provide optical interfaces can be used.



Huawei switches using non-certified optical module may not be able to read the information, can not guarantee the accuracy of the information read, recommend the use of Huawei certified optical ...



Are Optical Modules of Huawei Switches Interchangeable with Optical Modules of Other Manufacturers? No. Huawei S switches must use Huawei-certified S switch optical modules.

Contact Us

For more information, pricing, or custom network solutions, please contact us:

Website: <https://www.hashherbcafe.co.za>

Email: hello@hashherbcafe.co.za

Phone: +27 63 814 7295

Address: 15 Galaxy Road, Linbro Business Park, Johannesburg, 2065, South Africa

This document is for informational purposes only. Specifications subject to change without notice.

