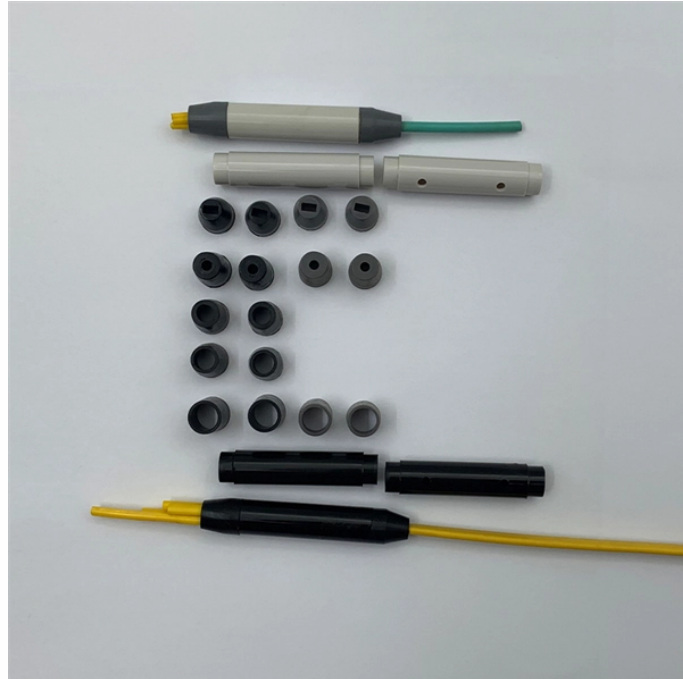


# Calculation for Cable Tray Slope Installation



## Overview

The Cable Tray Slope & Fabrication Calculator is a field-ready tool for electrical construction workers who need to quickly calculate V-cut dimensions, bolt hole positions, slope length, and hanger spacing for inclined cable tray installations. SVG diagram for on-site marking. Use this tool to estimate sloped section length, horizontal run requirement, cut marks, and installation feasibility. Measure this distance along the straight tray. Article Summary: A compliant cable tray installation requires a thorough understanding of NEC Article 392, proper structural support, and precise installation techniques. This calculator features an interactive interface with advanced visualizations. 0133 sq in each, the screen is about 0. Additional engineering factors must be considered to ensure safety, reliability.

## Calculation for Cable Tray Slope Installation



Use the Conduit Fill Calculator for raceway work, the Wire Size Calculator for conductor sizing, the Cable Ampacity Calculator for bundled cable ampacity review, and the NEC Raceway Fill ...



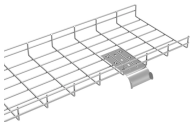
Proper planning for installing cable tray includes calculations based on loading, support systems, cable/wire fill and spacing, conductor types, securing of the cables and wire, and proper grounding ...



The Cable Tray Slope & Fabrication Calculator is a field-ready tool for electrical construction workers who need to quickly calculate V-cut dimensions, bolt hole positions, slope length, and hanger ...



The right cable tray sizing calculator helps engineers turn cable schedules into a verified tray width and fill check before material ordering and site installation.



Use this cable tray offset calculator to estimate sloped section length, required horizontal run, and installation feasibility for vertical, horizontal, and compound tray offsets.



Estimate capacity using width, depth, and packing factor controls today. Add cable types, diameters, and counts with instant results display. Export CSV and PDF summaries for quick reviews.



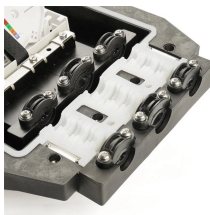
This guide covers the critical steps, from selecting the right electrical cable tray and performing accurate cable fill calculations to managing a safe cable pull through and ensuring all bonding and grounding ...



Calculate cable tray fill per NEC 392 — ladder, solid-bottom, and ventilated trough trays with sizing examples and code requirements.



Our wind certification report provides you with list of acceptable B-Line series cable tray supports, fittings and covers based off of the environmental conditions, cable loading, and type of cable tray in your ...



The cable tray calculator determines the required tray width and type based on the number and size of cables to be installed, ensuring adequate fill levels and derating compliance.

## Contact Us

For more information, pricing, or custom network solutions, please contact us:

Website: <https://www.hashherbcafe.co.za>

Email: [hello@hashherbcafe.co.za](mailto:hello@hashherbcafe.co.za)

Phone: +27 63 814 7295

Address: 15 Galaxy Road, Linbro Business Park, Johannesburg, 2065, South Africa

This document is for informational purposes only. Specifications subject to change without notice.

