

Cable wells and distribution boxes



Cable wells and distribution boxes



The DB Distribution Box at a Glance Nearly Unlimited Possibilities - with Certified Standards Cables with a diameter of 1 to 15 mm can be routed, sealed with IP54 (acc. to 60529) and strain relieved in ...



NWPX Park offers precast electric utility boxes designed for underground electrical infrastructure. Our durable pull boxes, handholes, and splice boxes provide secure storage and protect the contents ...



The Vertiv™ NetSure™ External Distribution Box (EDB) holds both DC distribution and fiber distribution in a single convenient enclosure. Aluminum construction helps protect against vandalism and harsh ...



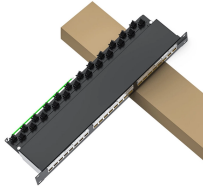
A Cable Branching Box is a crucial component in high-voltage power networks, ensuring safe and efficient cable branching. It supports underground and overhead distribution systems, providing ...



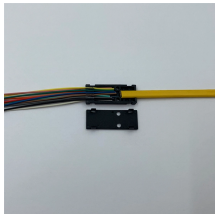
Our Christy range of concrete enclosures, lids and accessories provides robust, durable utility access in deliberate traffic environments and high-impact applications.



Perlegear 17" in-Wall Media Box, Electrical Box, Recessed Outlet Box and Media Enclosure for One Connect Box & Network Switches, Cable Management Kit with Cutting Template, Dust Bag & ...



DOHO is a leading cable distribution box manufacturer and supplier. We cater to applications including industrial, data center, security, and telecommunications. With a range of products, we offer solutions ...



Designed for underground or outdoor distribution systems, the Cable Distribution Box offers a tamper-resistant and weatherproof solution for medium voltage control and protection. Our Cable Distribution ...



Choose from a variety of underground separable connectors and accessories for utility, commercial, industrial and generation applications. We offer the industry's broadest line of enclosures, separable ...



Weatherproof outdoor cable distribution boxes with IP65 rating, arc-proof design, and flexible terminations for safe, reliable power distribution up to 10kV.

Contact Us

For more information, pricing, or custom network solutions, please contact us:

Website: <https://www.hashherbcafe.co.za>

Email: hello@hashherbcafe.co.za

Phone: +27 63 814 7295

Address: 15 Galaxy Road, Linbro Business Park, Johannesburg, 2065, South Africa

This document is for informational purposes only. Specifications subject to change without notice.

