

Cable tray shrinkage joint



Cable tray shrinkage joint



An expansion splice plate may have slotted holes to allow for movement in the cable tray. A bonding jumper is required where cable tray systems are mechanically discontinuous.



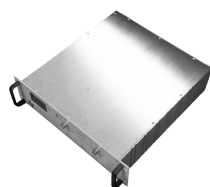
It is important that cable tray installations incorporate features which provide adequate compensation for their thermal contraction and expansion. The length of the continuous cable tray straight run, and the ...



Hot-dip galvanized (EN ISO 1461) DG (dipped-galvanized) Whenever cable support systems are exposed to the elements and/or caustic substances (such as petrochemical applications), they are ...



Thermal expansion and contraction of cable trays must be accounted for through the use of expansion joints. Proper installation of expansion joints is important to prevent tearing, bending, or damage ...



NEMA has a free PDF installation guide that gives you the information needed to calculate how many expansion joints are needed. The code never tells you that you need one every so many ...



For a 100° F differential (winter to summer), a steel cable tray will require an expansion joint every 128 feet and an aluminum cable tray every 65 feet. The temperature at the time of installation will dictate ...



Learn how to manage thermal expansion and contraction in cable tray systems with expert tips on expansion joints, guides, and spacing to ensure long-term structural integrity.



Our wind certification report provides you with list of acceptable B-Line series cable tray supports, fittings and covers based off of the environmental conditions, cable loading, and type of cable tray in your ...



The cable tray needs to be anchored at the support closest to the midpoint between the expansion joints with hold down clamps and secured by expansion guides at all other support locations. The ...



Discover best practices for cable tray expansion joint installation to accommodate thermal changes, ensuring structural integrity and compliance with NEC and NEMA standards.

Contact Us

For more information, pricing, or custom network solutions, please contact us:

Website: <https://www.hashherbcafe.co.za>

Email: hello@hashherbcafe.co.za

Phone: +27 63 814 7295

Address: 15 Galaxy Road, Linbro Business Park, Johannesburg, 2065, South Africa

This document is for informational purposes only. Specifications subject to change without notice.

